

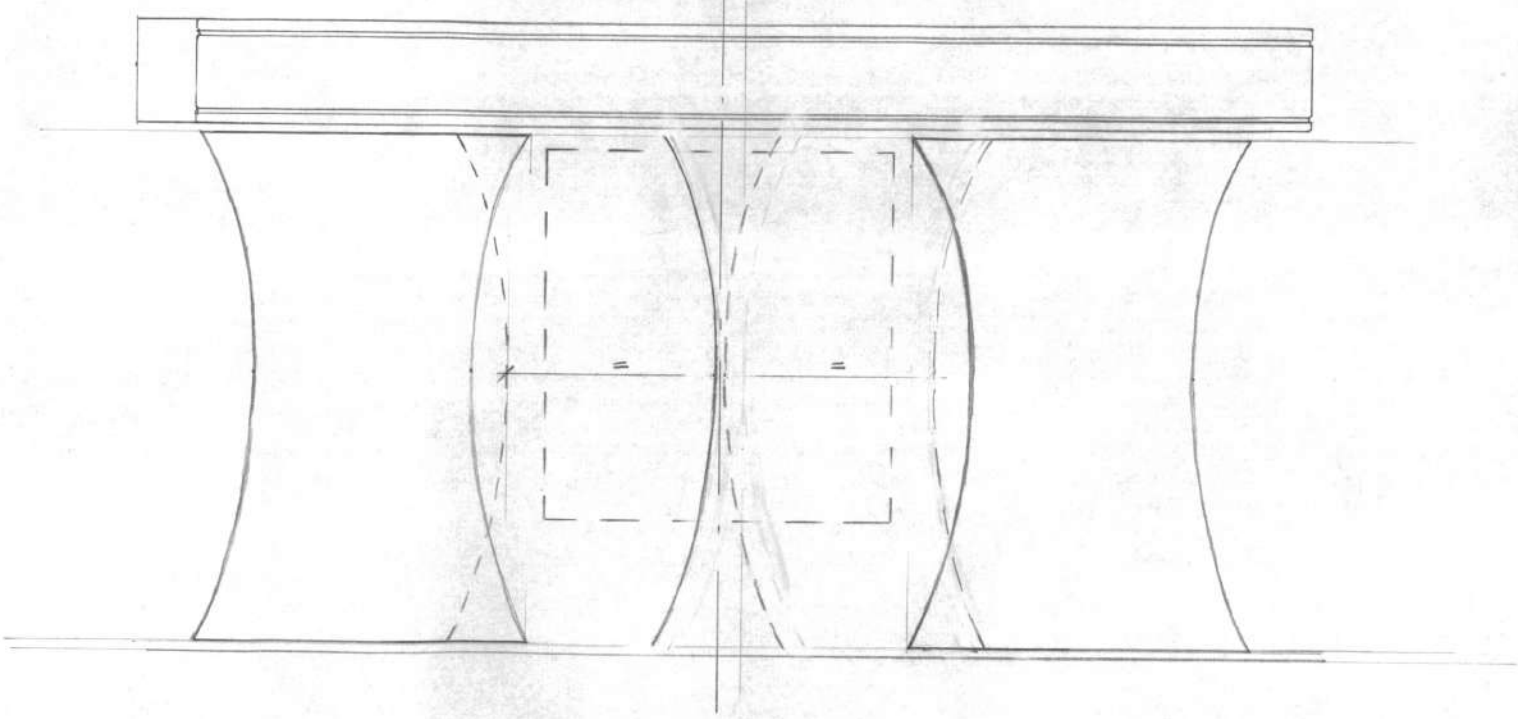
**DK**

**Draper**

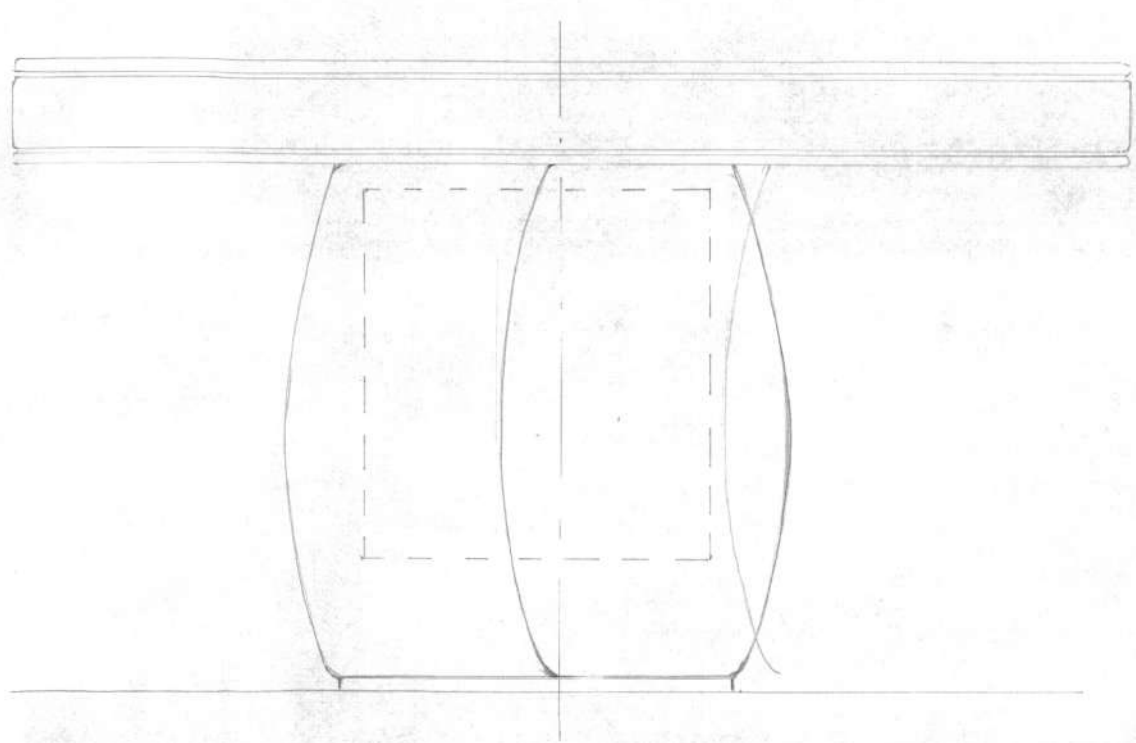
**TV Cabinet**

**London**

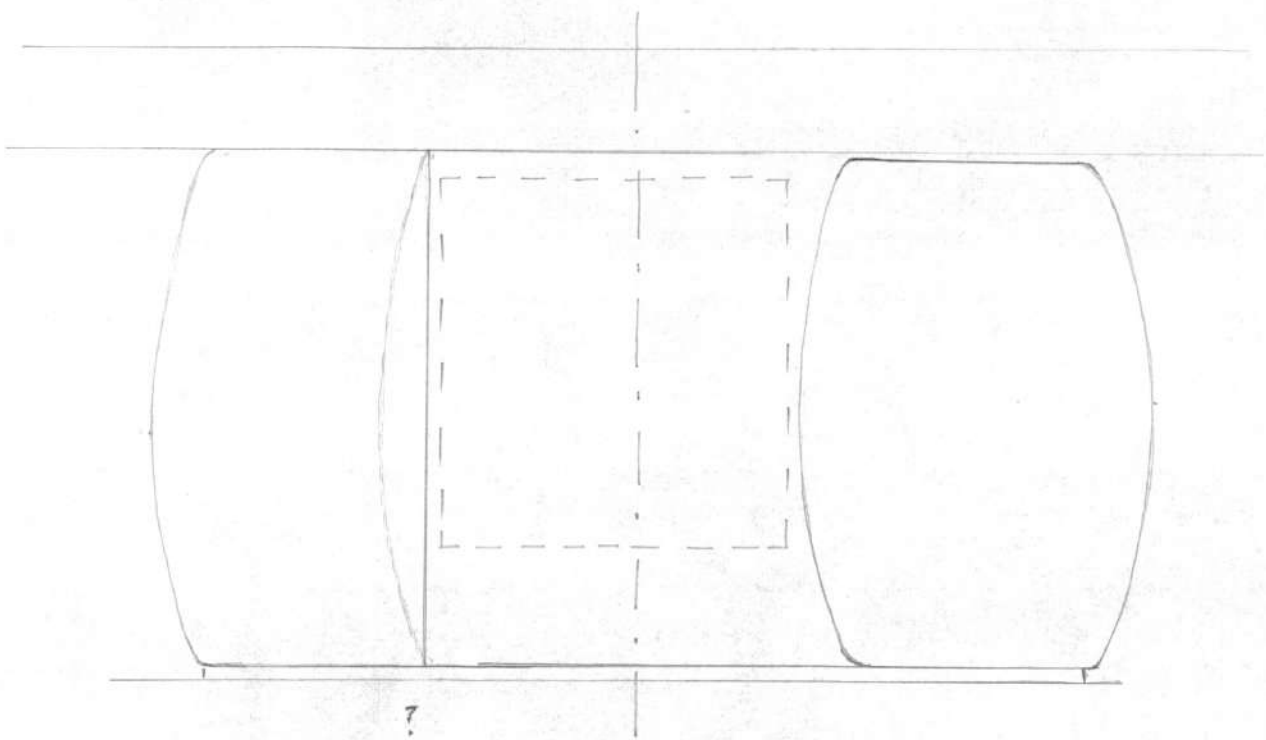
New  
C/line



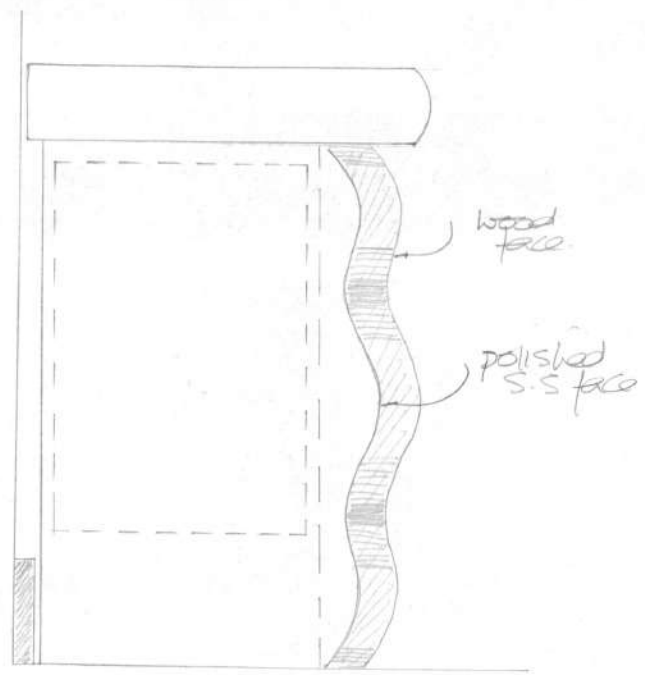
21



1:10



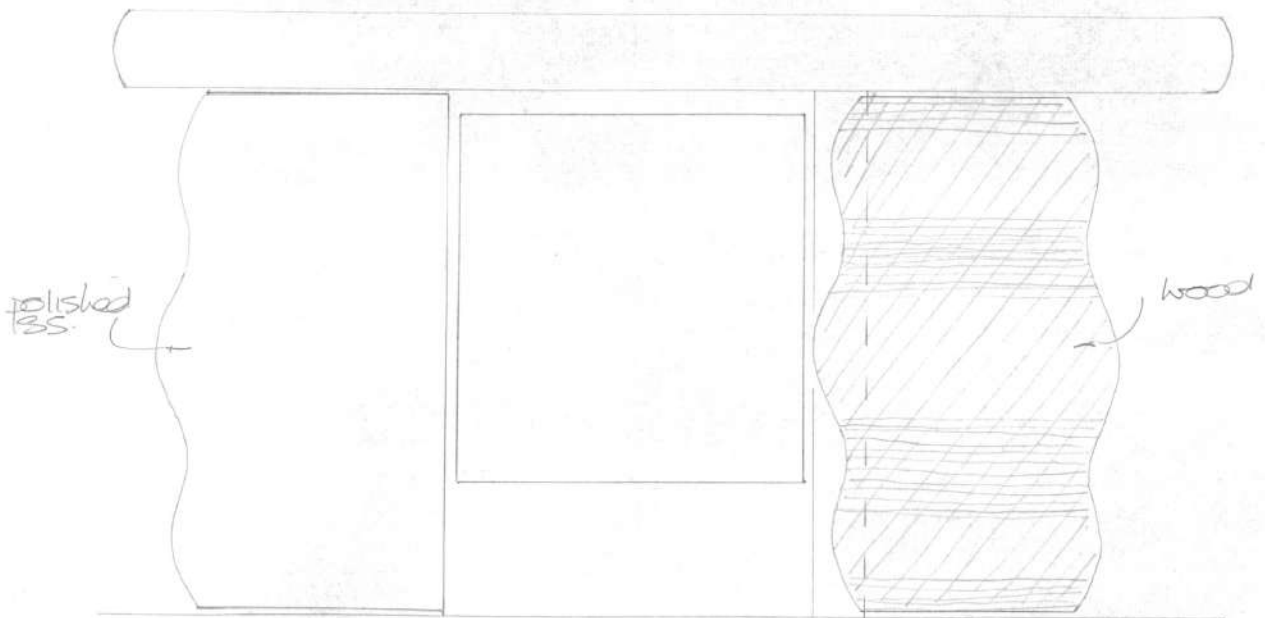
? most difficult to make.  
undulating metal sliding up  
behind undulating wood.



Side Elev / Sect. (Alt B)

TV cabinet  
DRAWING ROOM, BUTE.

1:10  
July 190

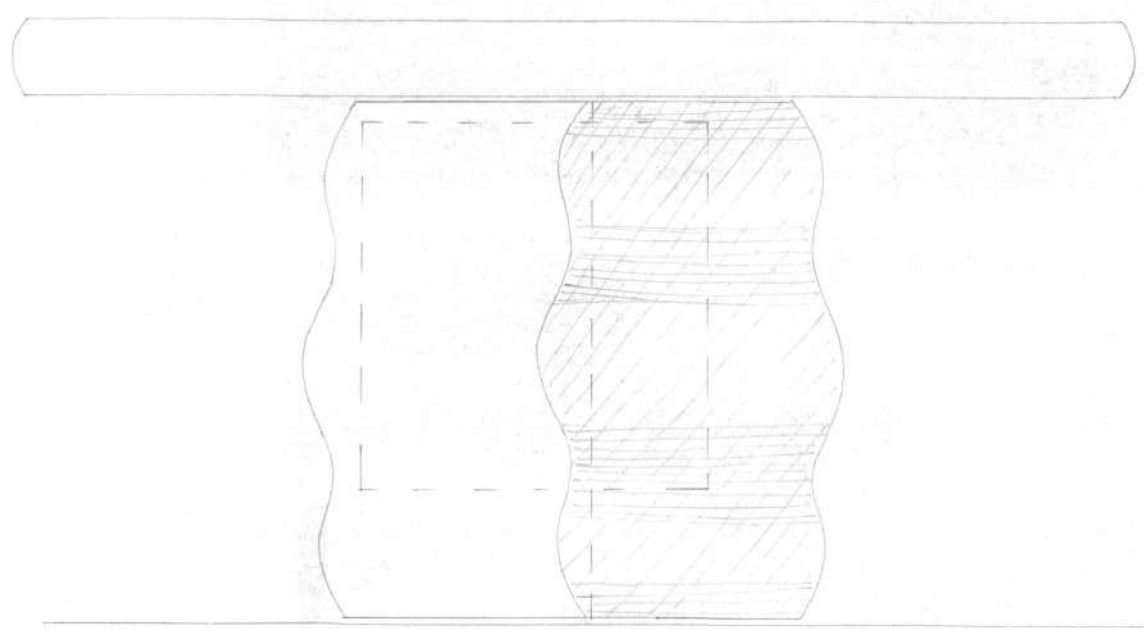


Doors Open (Alt B)

TV Cabinet,  
Drawing Room, BUTE.

more slightly  
to express edge  
against polished  
ss face.

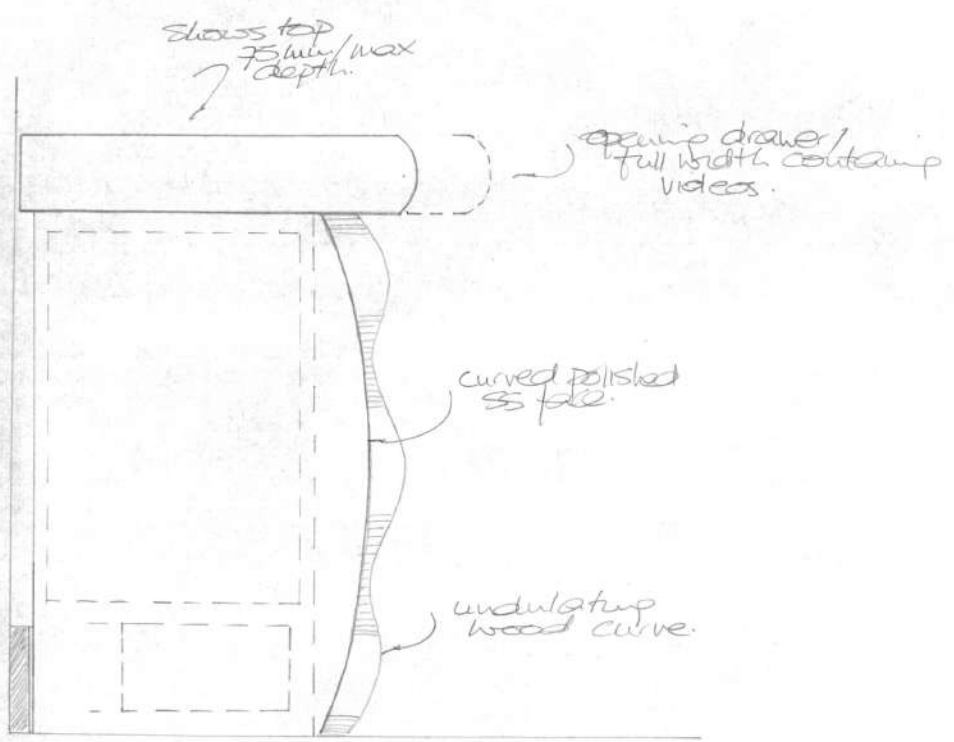
metal - v. hard to fabricate (?)



Doors Closed (Alt B) Identical Shapes

TV Cabinet  
Drawup Room, BUTE.

1:10  
July 190.

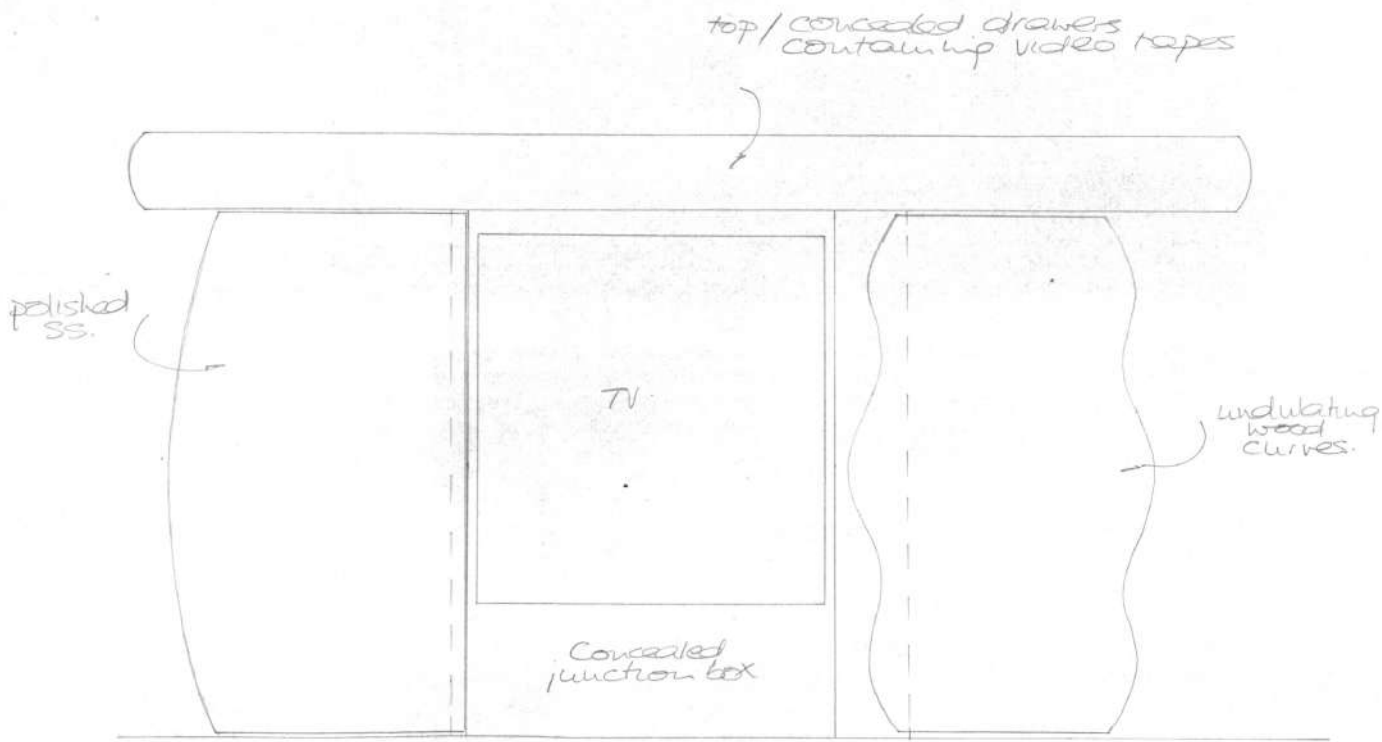


Side Elevation / Section (Alternative) A.

TV Cabinet  
Drawing Room, BUTE.

1:10  
July '90

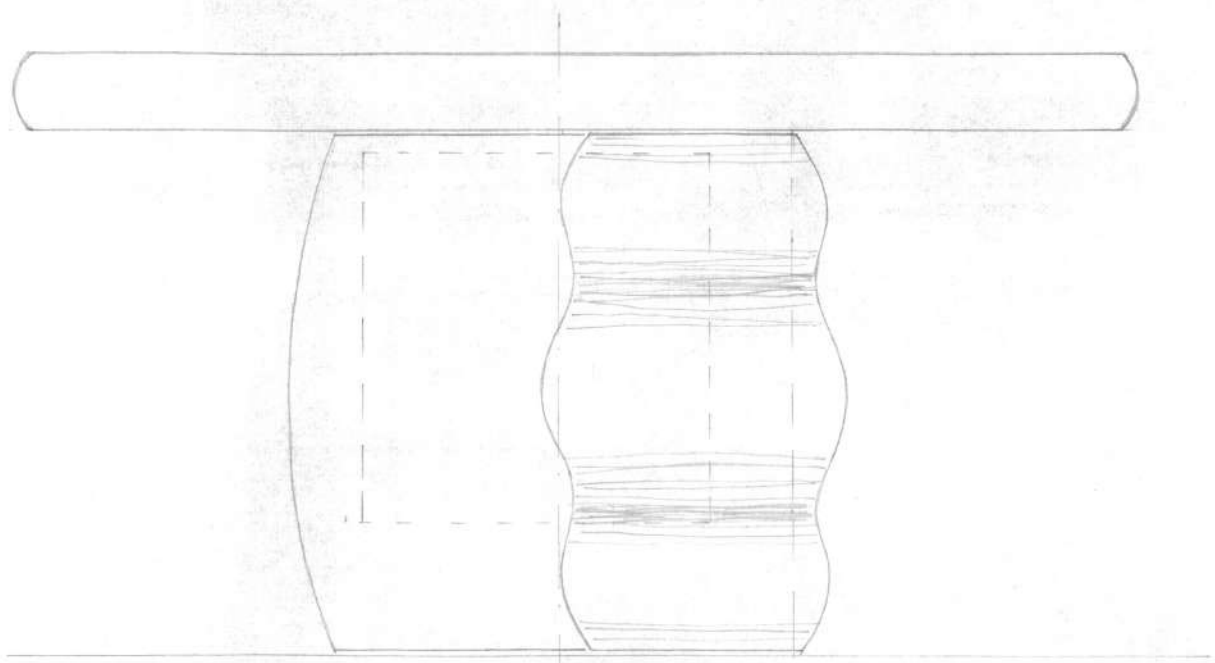




Front Elev. / Doors Open (Alternative) B.

TV Cabinet  
Drawing Room, BUTE

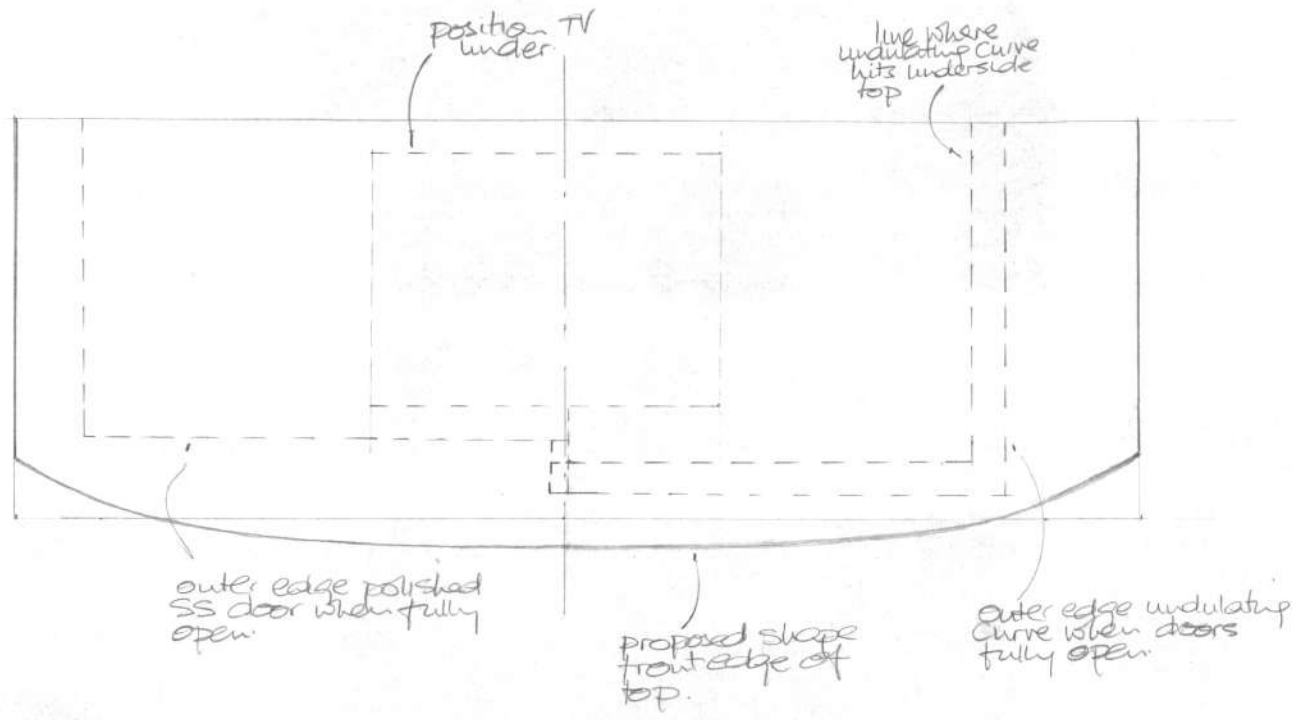
1:20  
July '90



Front Elev. doors closed (Alternative)-A.

TV Cabinet  
Drawing Room, BUTE

1:20  
July '90

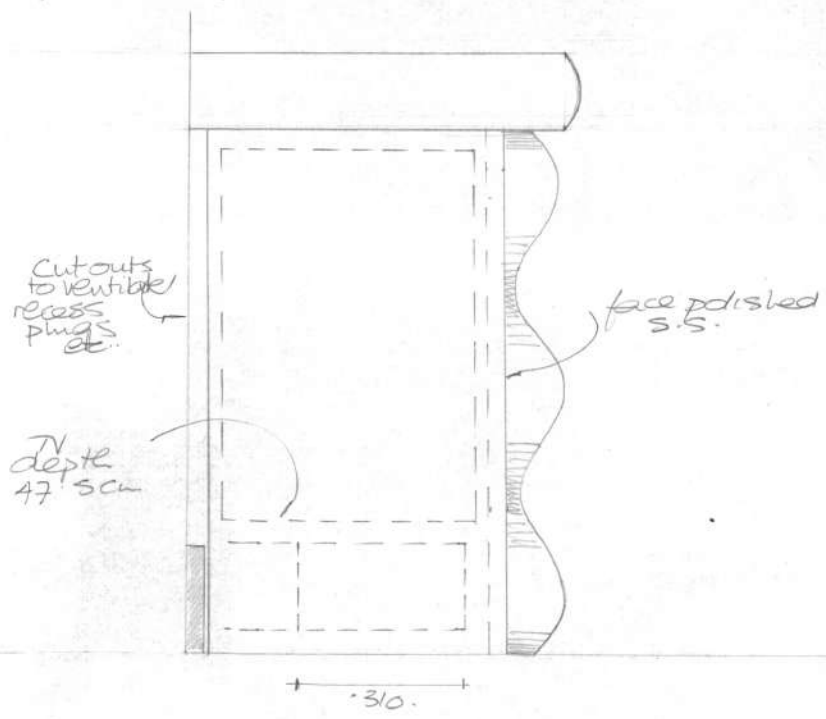


Plan - TV Cabinet  
 Drawing Room  
 Bute House.

- ? 4 drawers across.

1:10  
 July '90

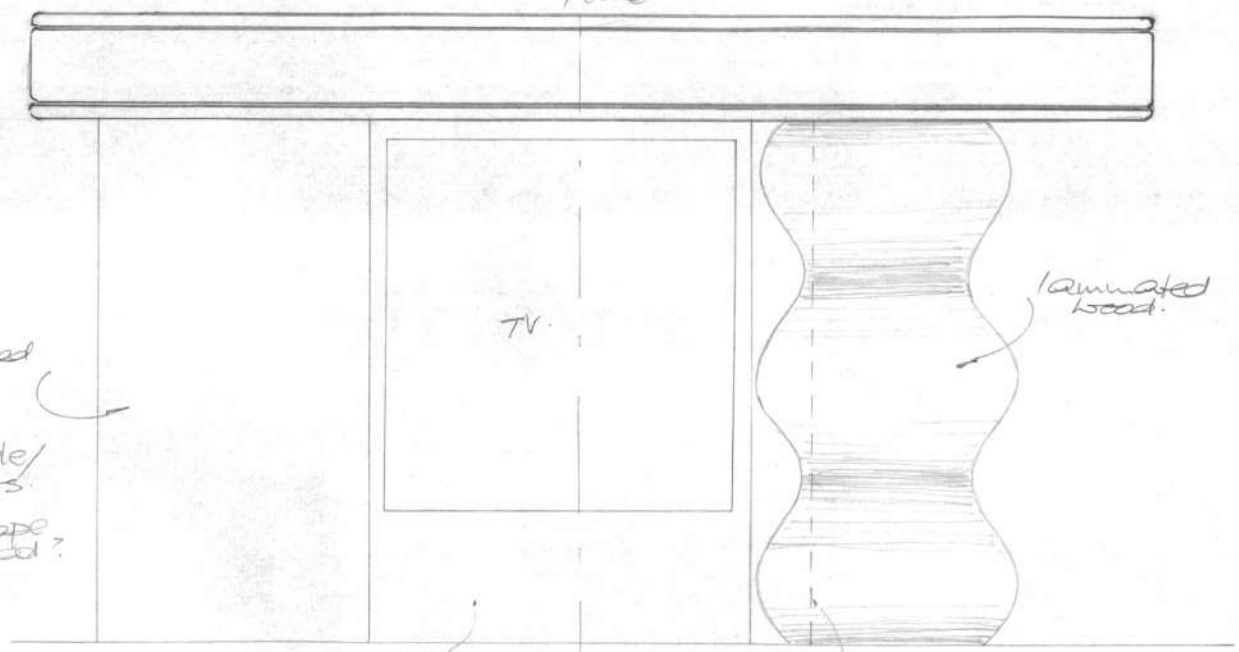
TV - 47.5 cm dp.  
? optimum max depth of top 70.0cm  
(injection box) - 1560 dp or 310 dp - 160h.



Left Side Elevation / Section  
TV cabinet / Drawing Room / BUTE.

1:10  
July '90.

q/line



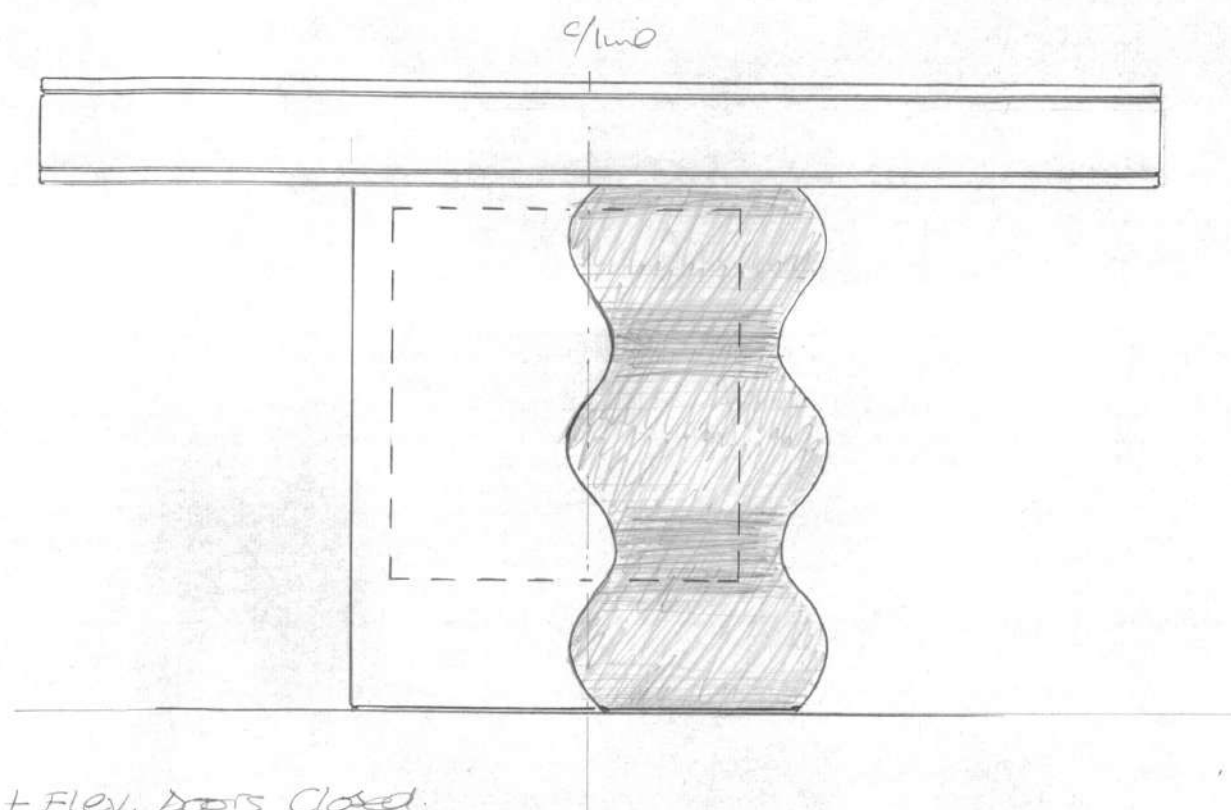
polished  
ss  
door.  
\*pure  
rectangle/  
other alts.  
uneven  
shape  
good/bad?

concealed  
fixing/access  
to lunch  
box

return of  
fixed carcass  
behind door

laminated  
wood.

1:10.



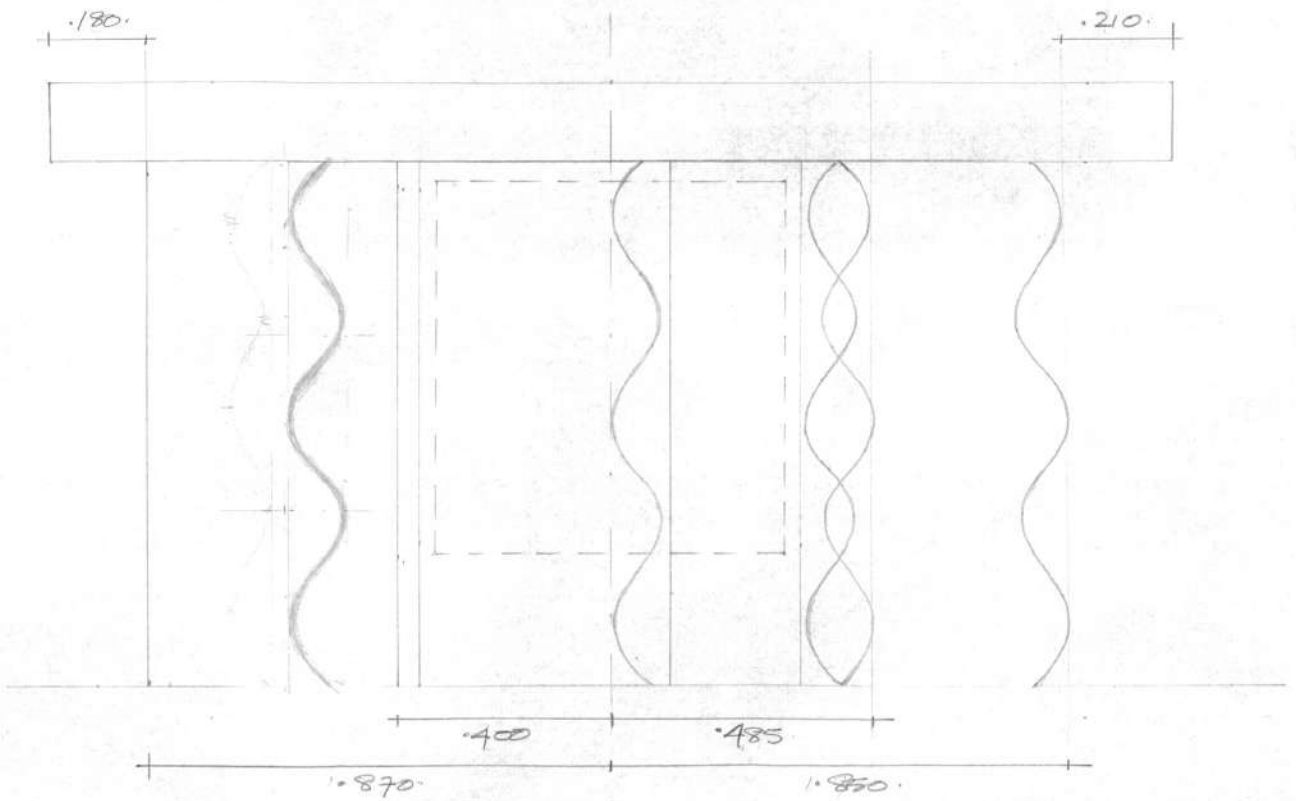
Front Elev. Doors Closed.

TV Cabinet  
Drawing Room, BUTE

11:10  
July '90

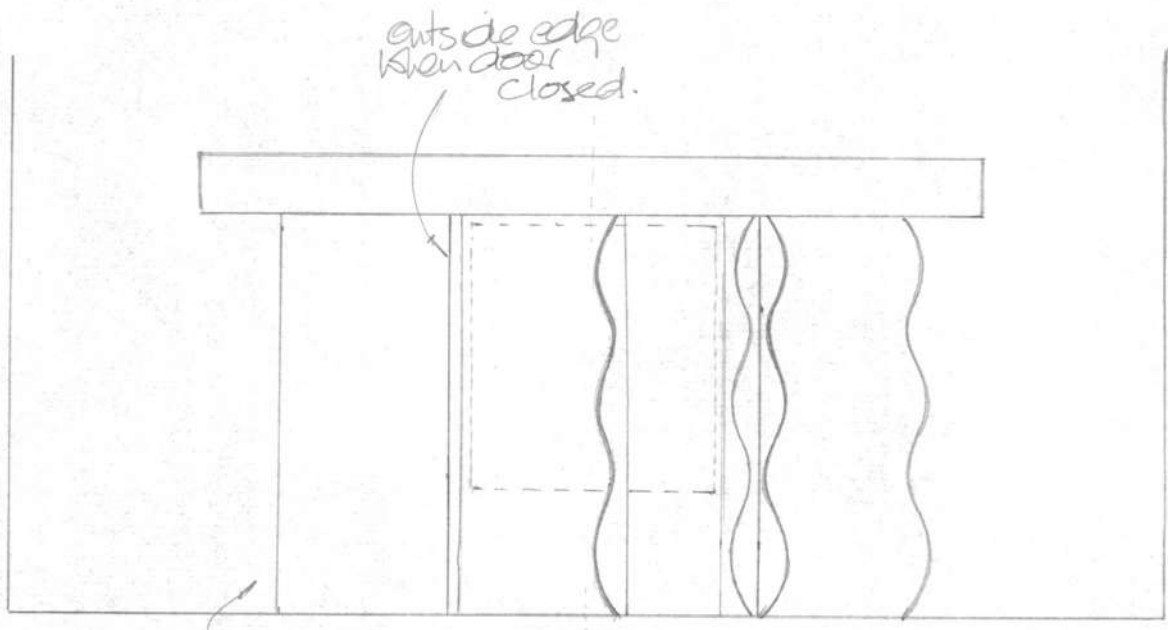
$.400 + .485 = .885$   
 $.870 + .850 = 1.720$   
Overall length = 2.100

7



TV Cabinet  
Drawing Room, BUTE.

1:10  
July 190.



outside edge SS door opening

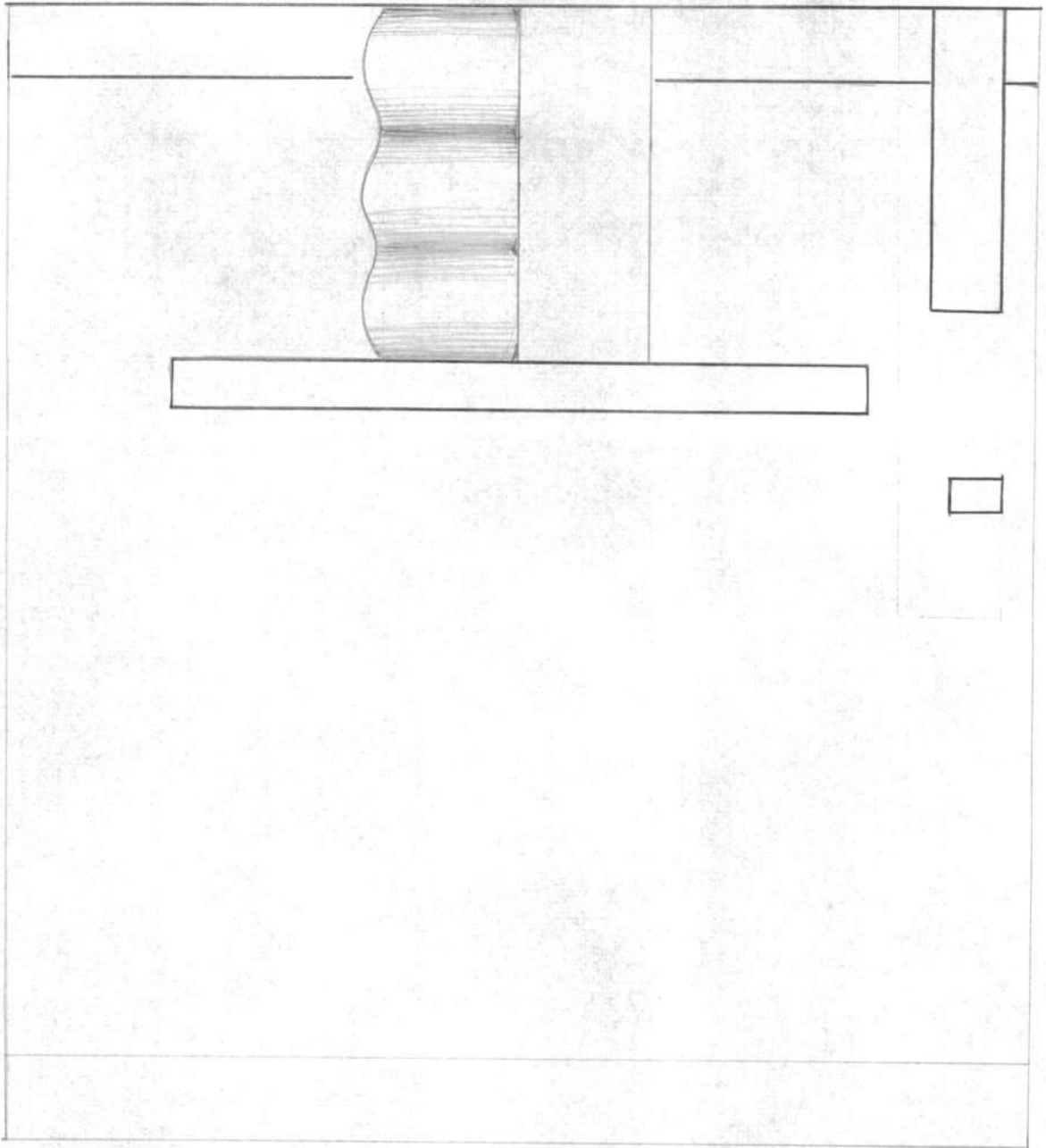
480W S.S. door

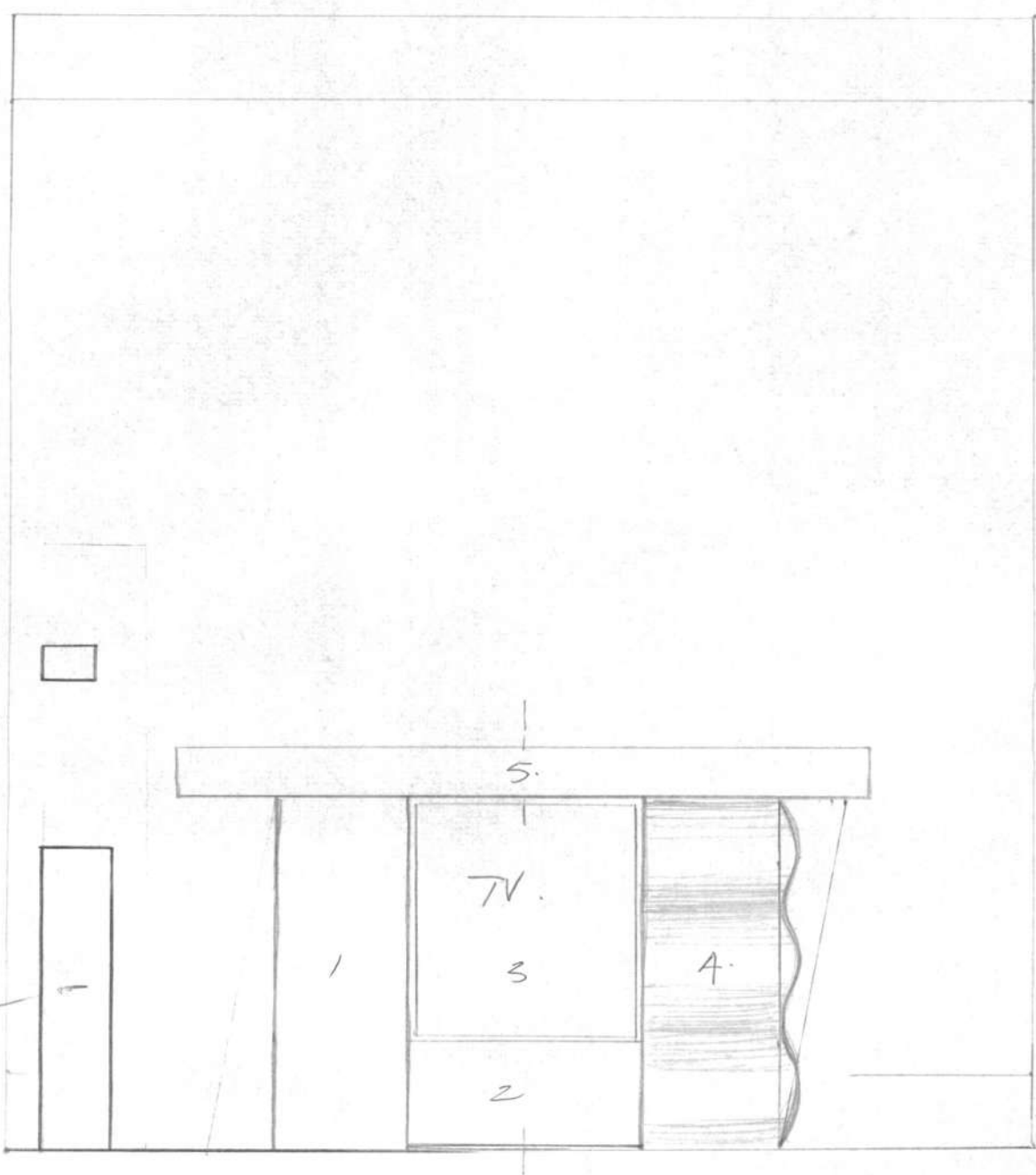


TV Cabinet,  
Drawing Room,  
BUTE HOUSE.

1:20  
July '90







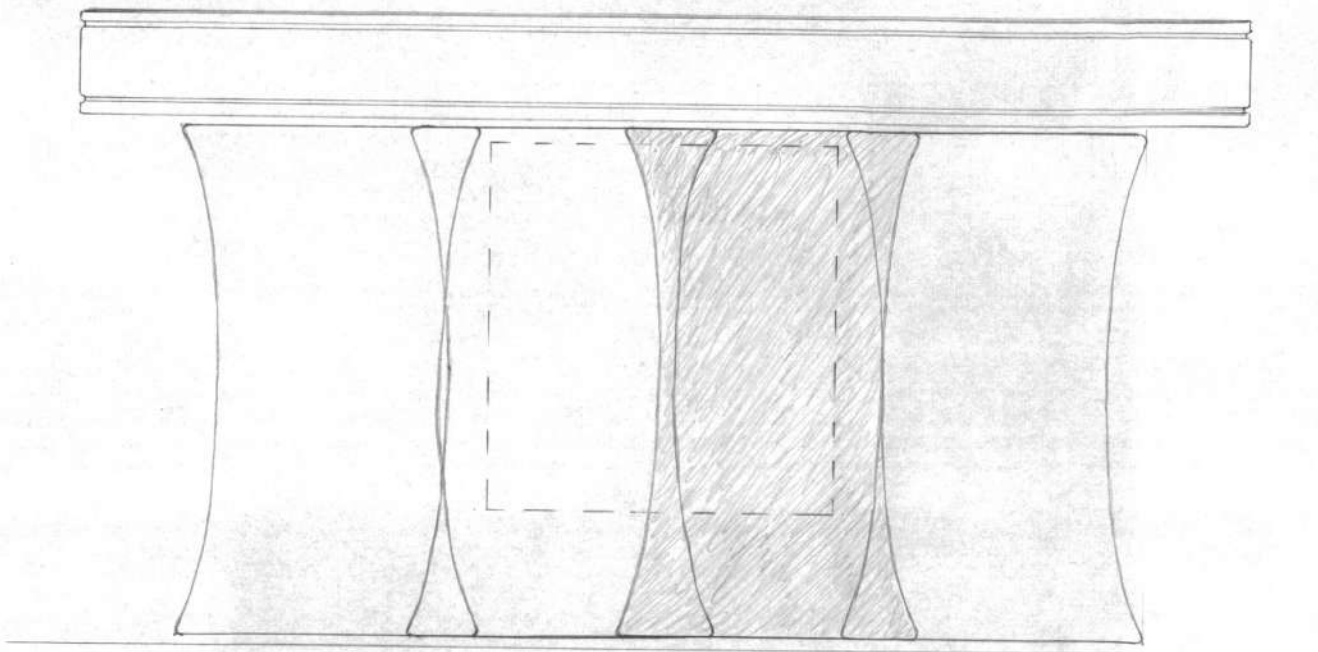
Speaker  
size

5 - materials when  
open.

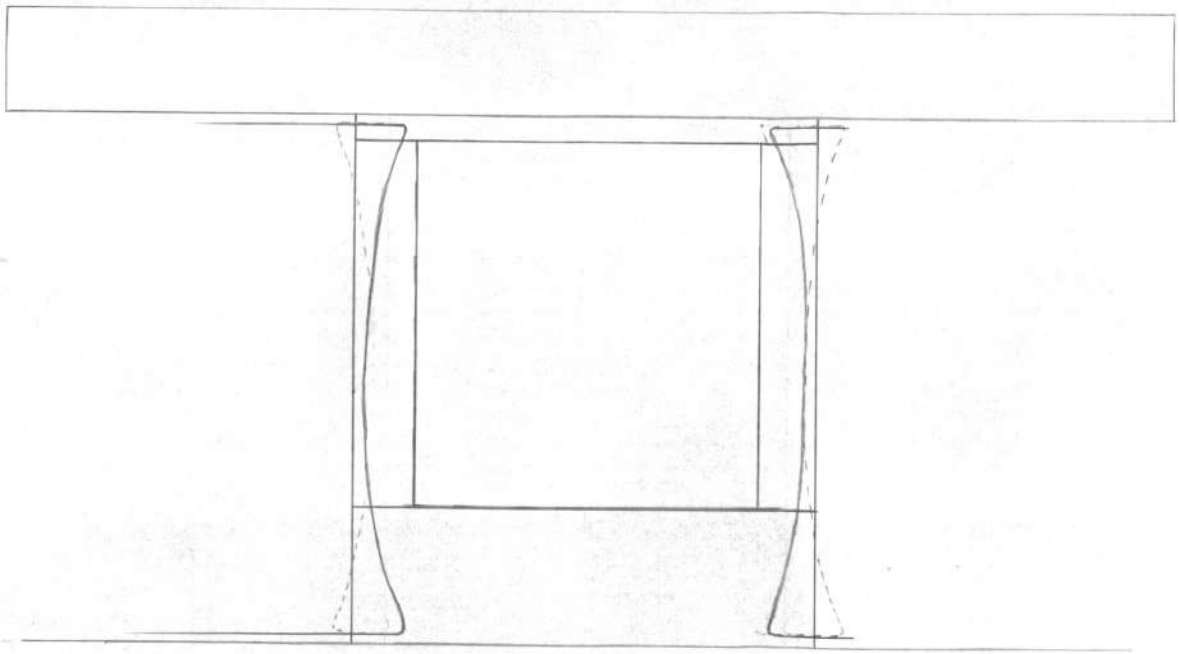
(? is 2 continuation of  
5 material (? black))

TV Cabinet Simon +  
Françoise - BUTE.

120  
July '90.

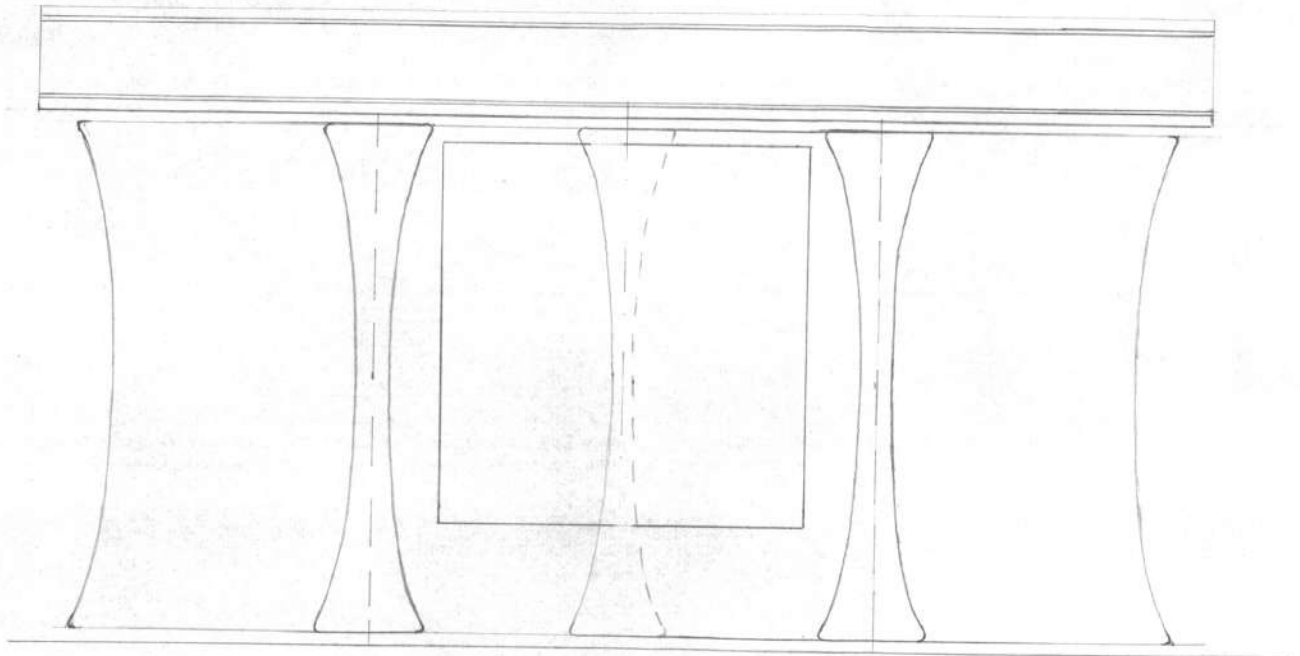


Sept '90



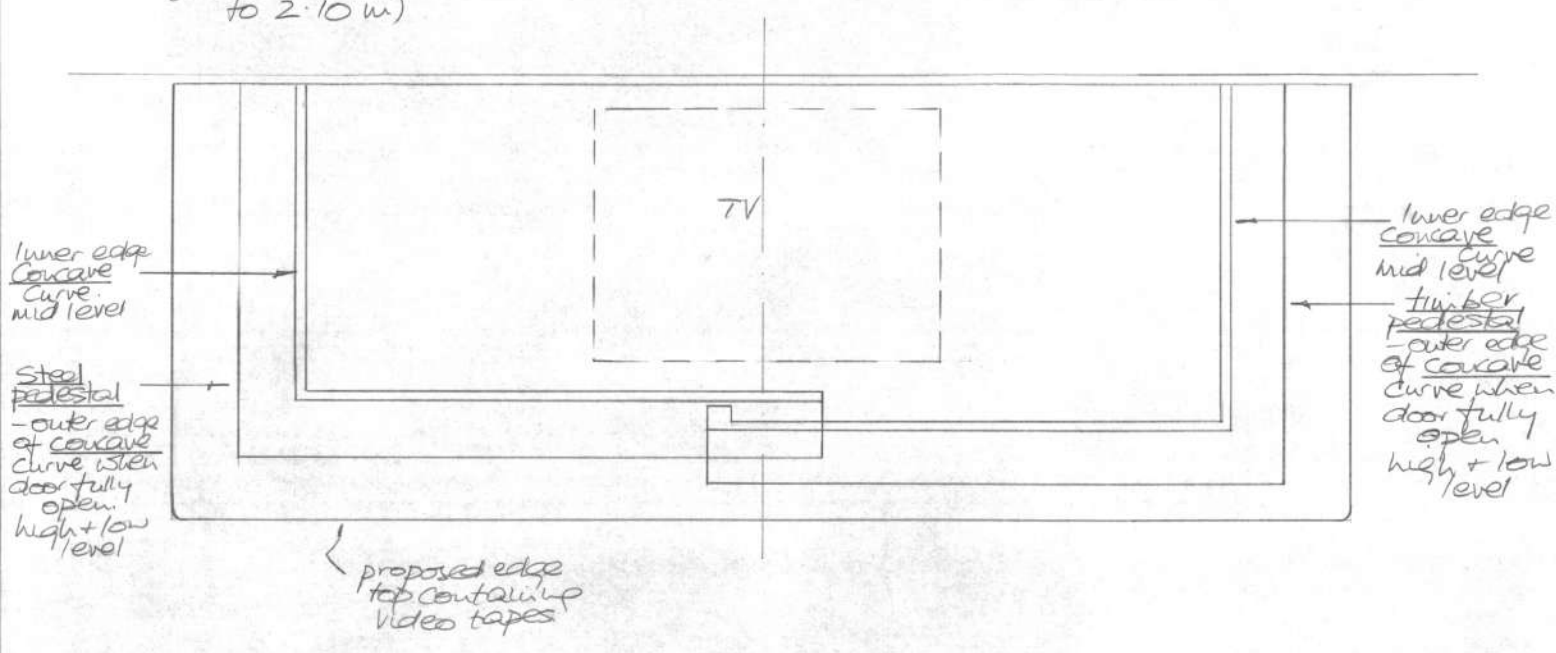
Sept '90

TV/Video 650w x 705h x 475dp. } - Cut out 680w  
Function Box 310w x 160h x 56dp. } x 720 high to  
allow tolerance



28.  
Type A.

TOP: 2.20 m x .80 m dp.  
(could reduce to 2.10 m)



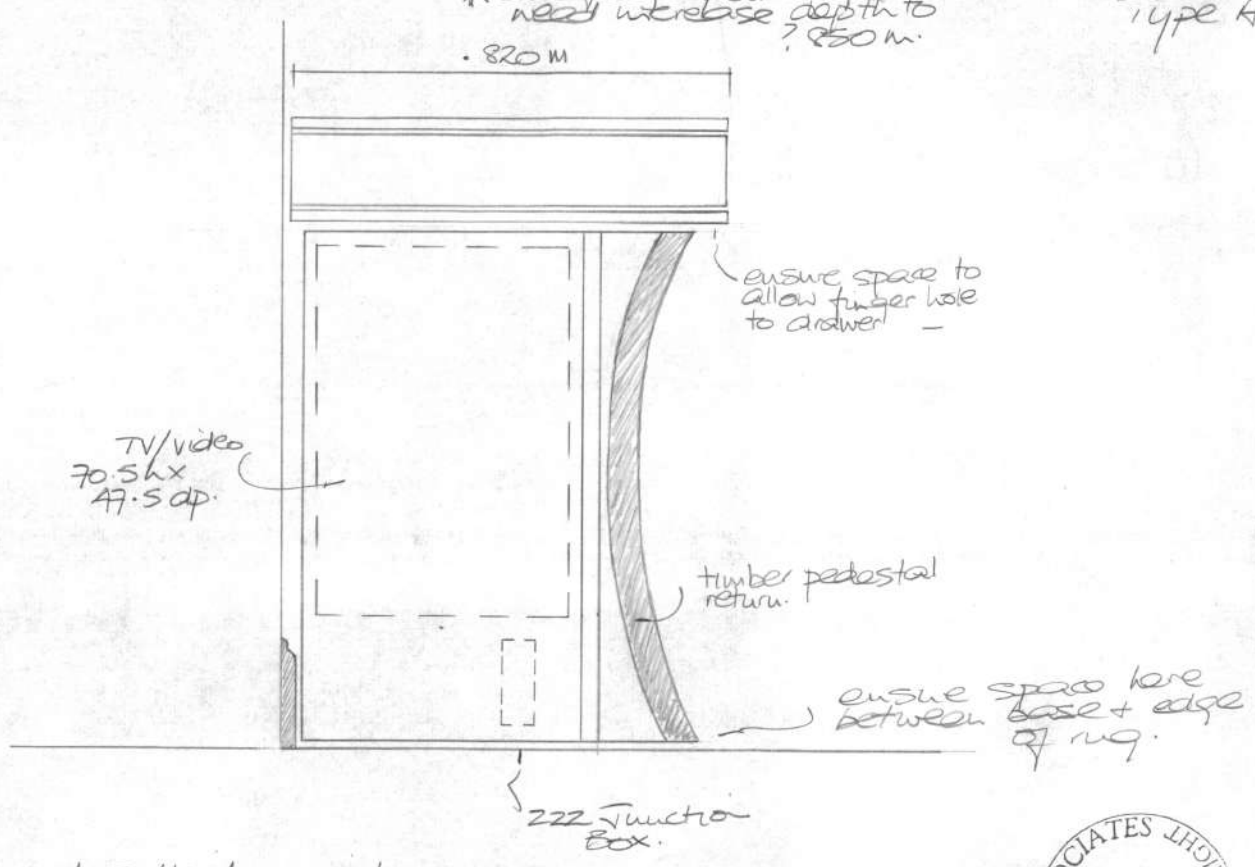
Plan Section - Show the position CONCAVE doors fully open



27.  
Type A

\* Due to finger pull might need increase depth to ? 850 mm.

• 820 mm



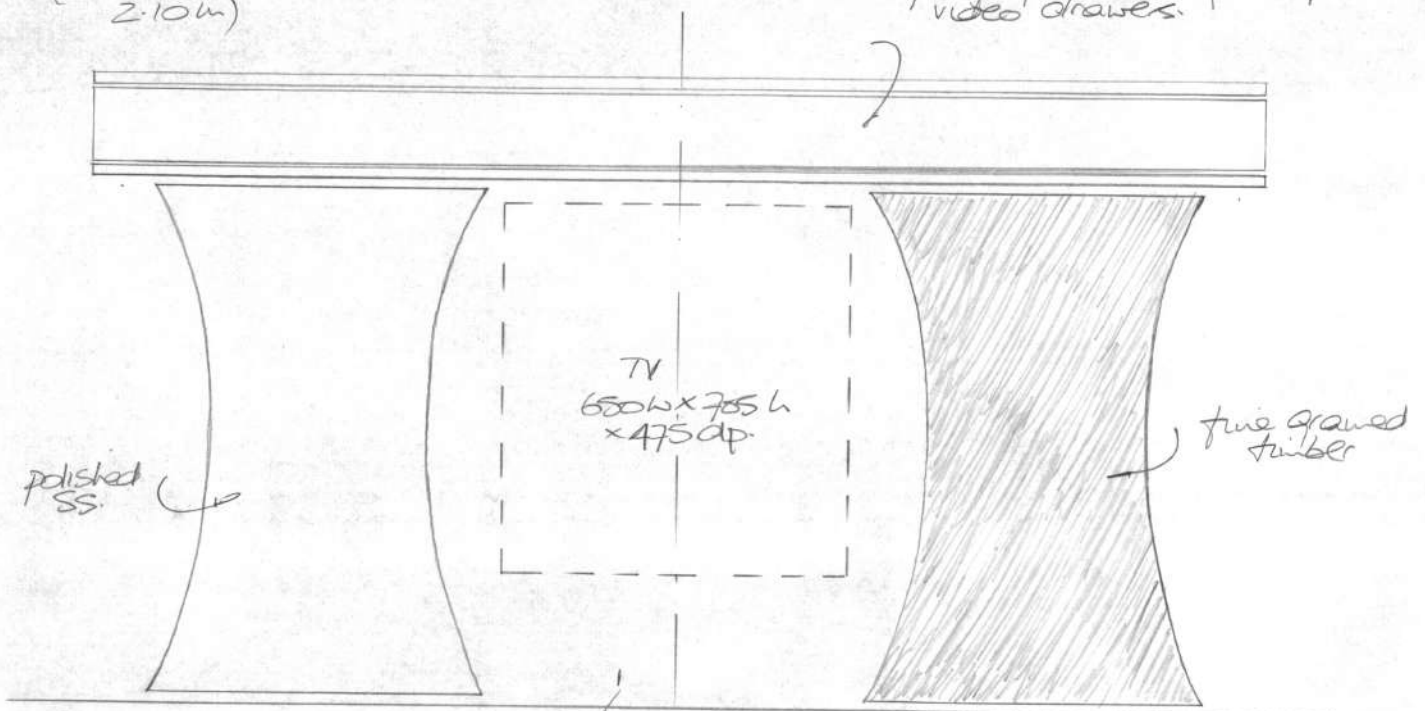
Proposed TV/Video Unit  
Drawing Room - BUTE  
- Left Side - Elev/ Sect.



TOP: 2.70 m x .82 m dp.  
(could reduce to  
2.10 m)

25.  
Type A

lacquer top containing  
video drawers.



Doors Open  
Proposed TV/Video Unit  
Drawing Room - BUTE

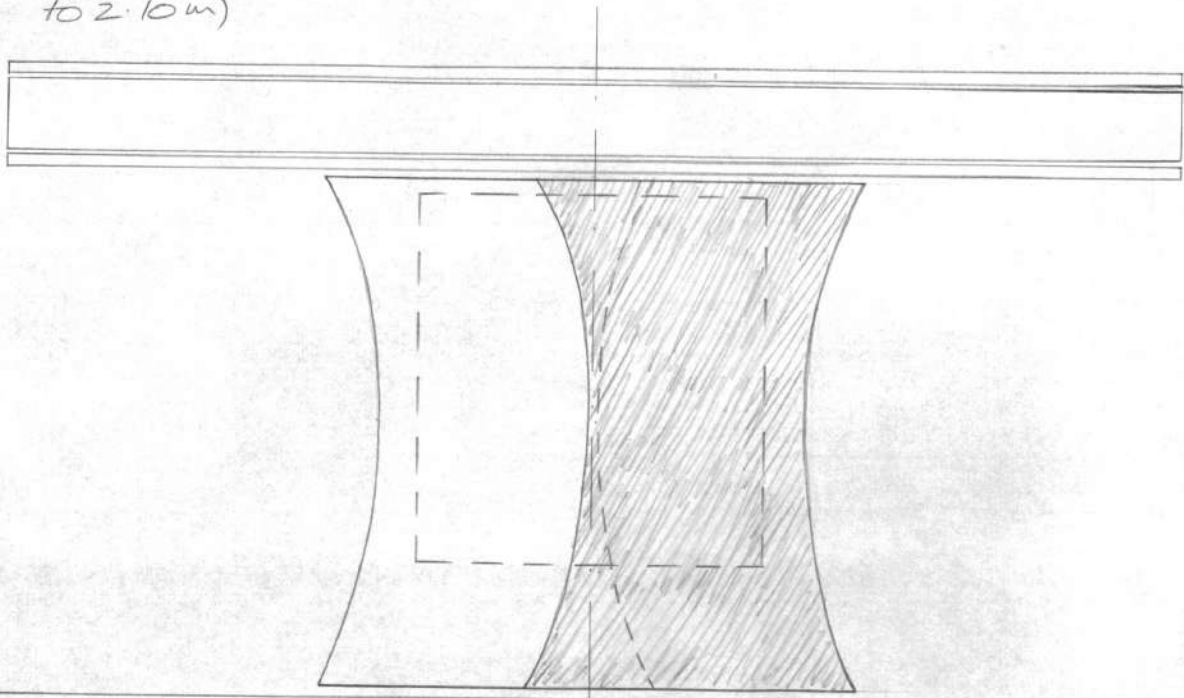
Junction Box Concealed  
under (provide access)  
310 w x 160 h x 56 dp





TOP: 2.20 m x .82 m ap  
(could reduce  
to 2.10 m)

25.  
Type A

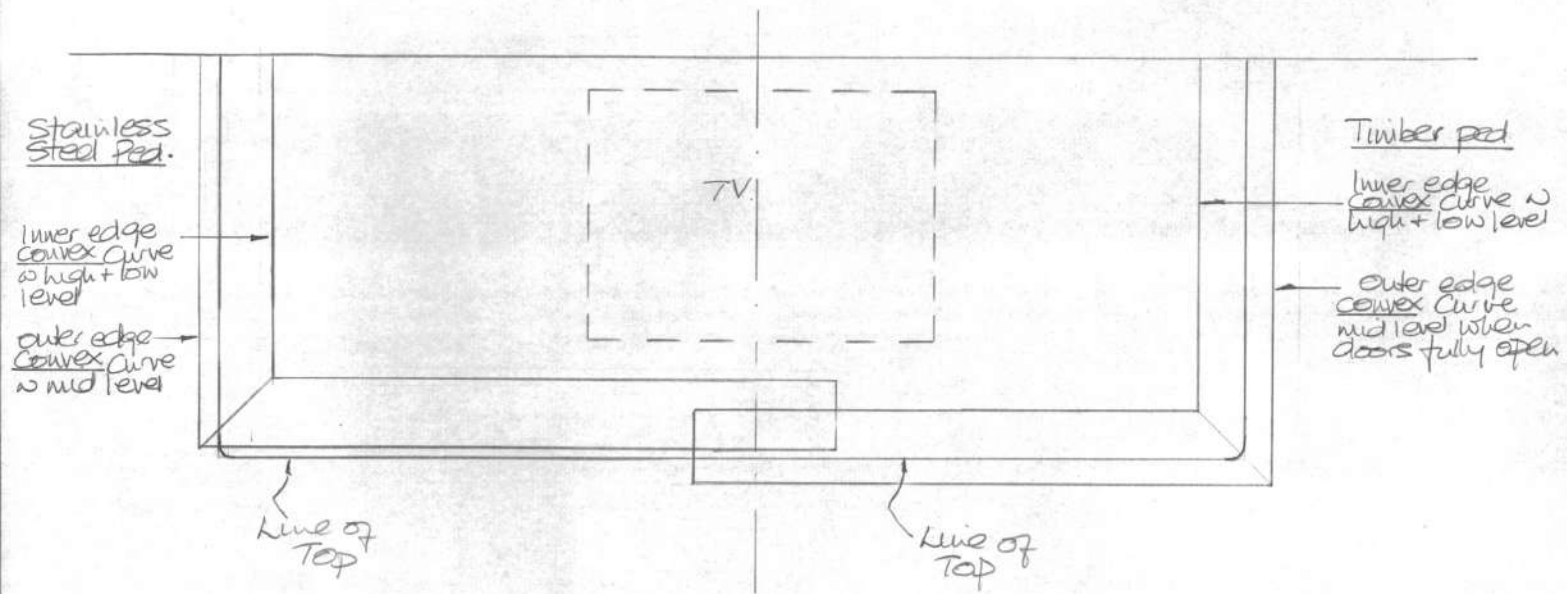


Doors Closed.  
Proposed TV/Video Unit  
DRAWING ROOM - BUTE.



TOP: 1.930 m x .745 m.

30.  
Type B.

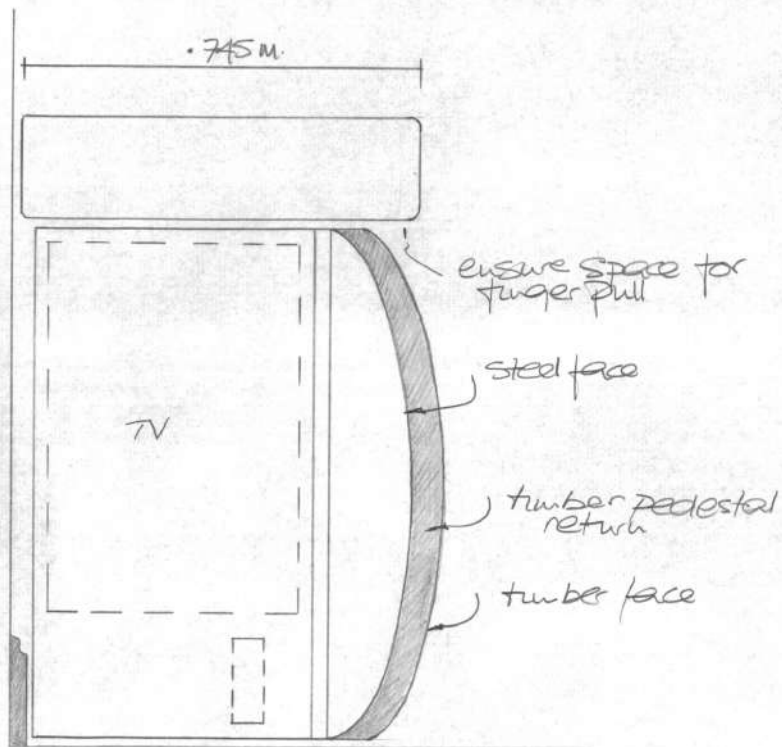


Plan Section - Showing position CONVEX doors fully open.



NB - with .745m  
base protrudes  
in front of top.

29.  
Type B

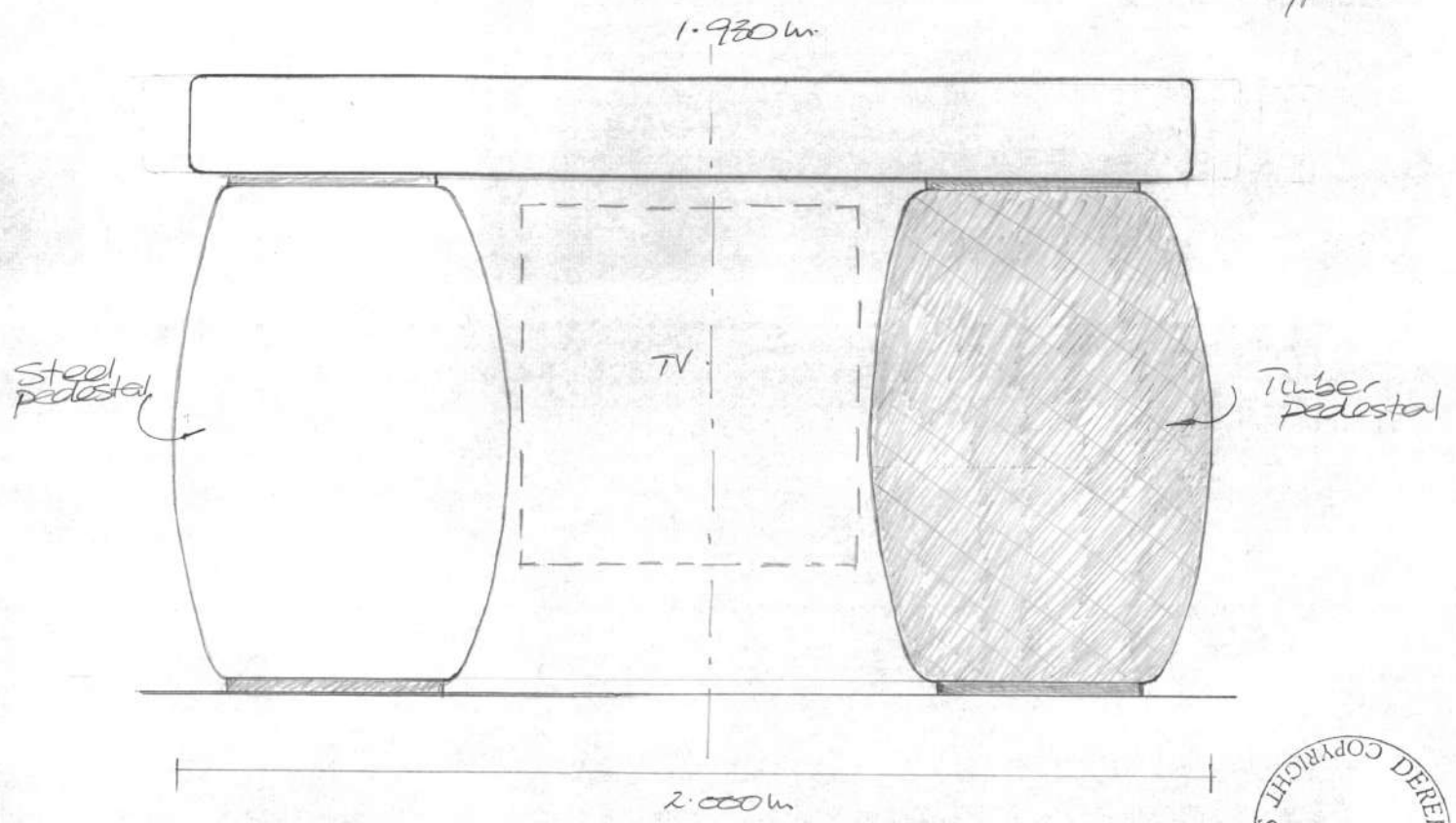


Left Side - Elev / Sect.

1:10



23  
Type B

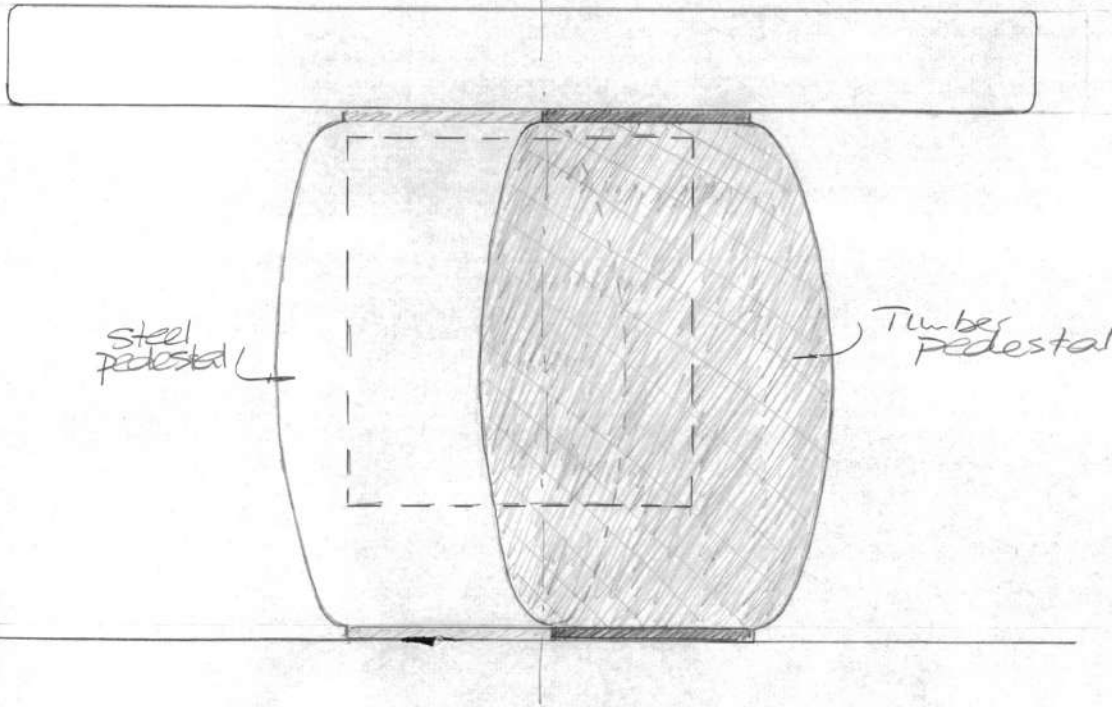


Doors Fully Open



22  
Type B.

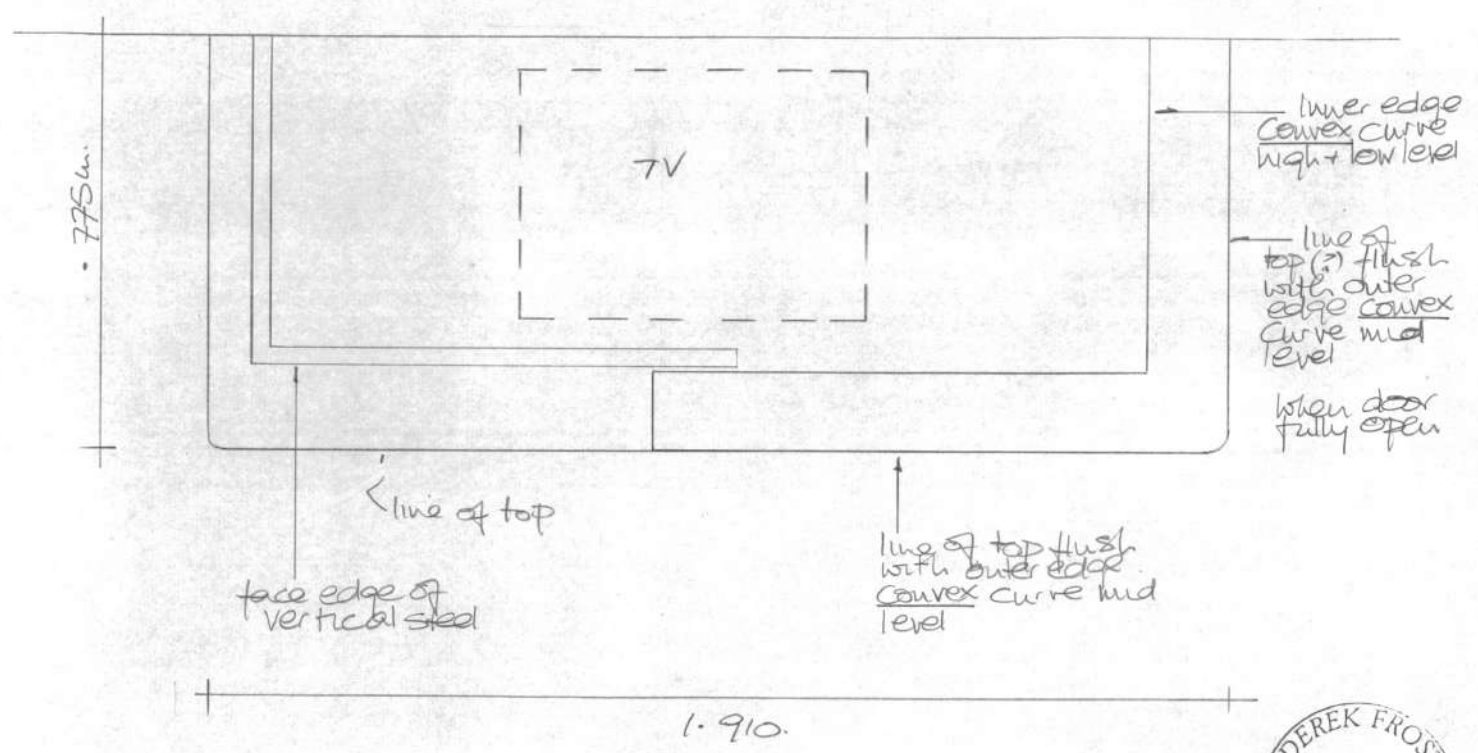
1.930 m.



doors Closed.



34  
Type C.

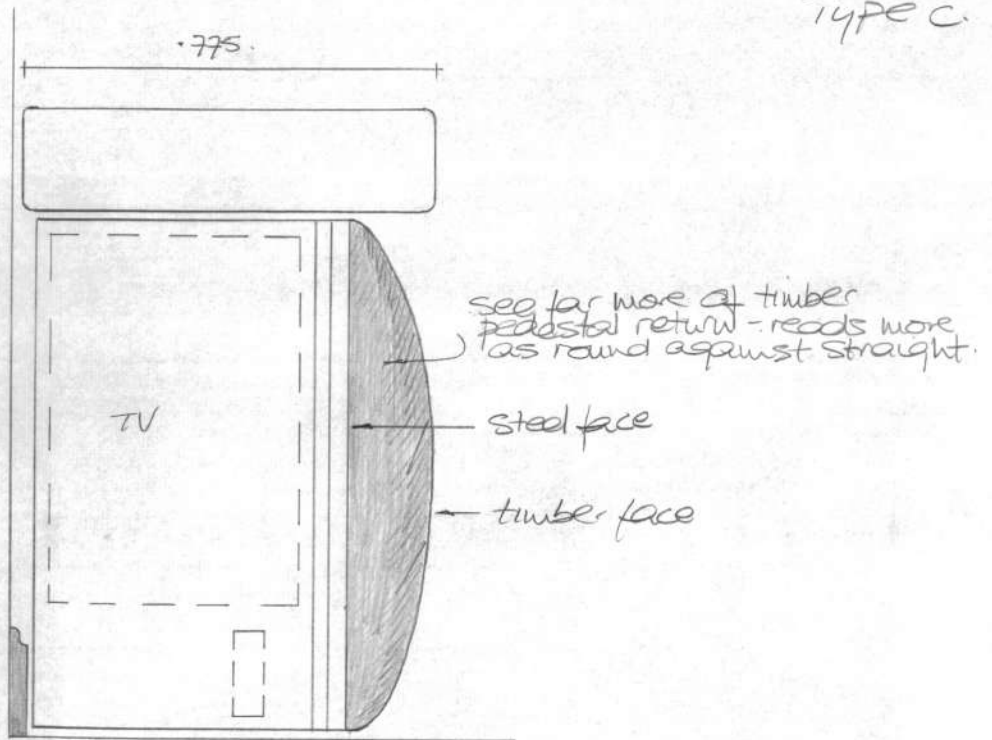


Plan Section - Showing position CONVEX timber + straight steel doors fully open



Type C.

NB - with 0.775m top edge is level with face edge of convex curve.



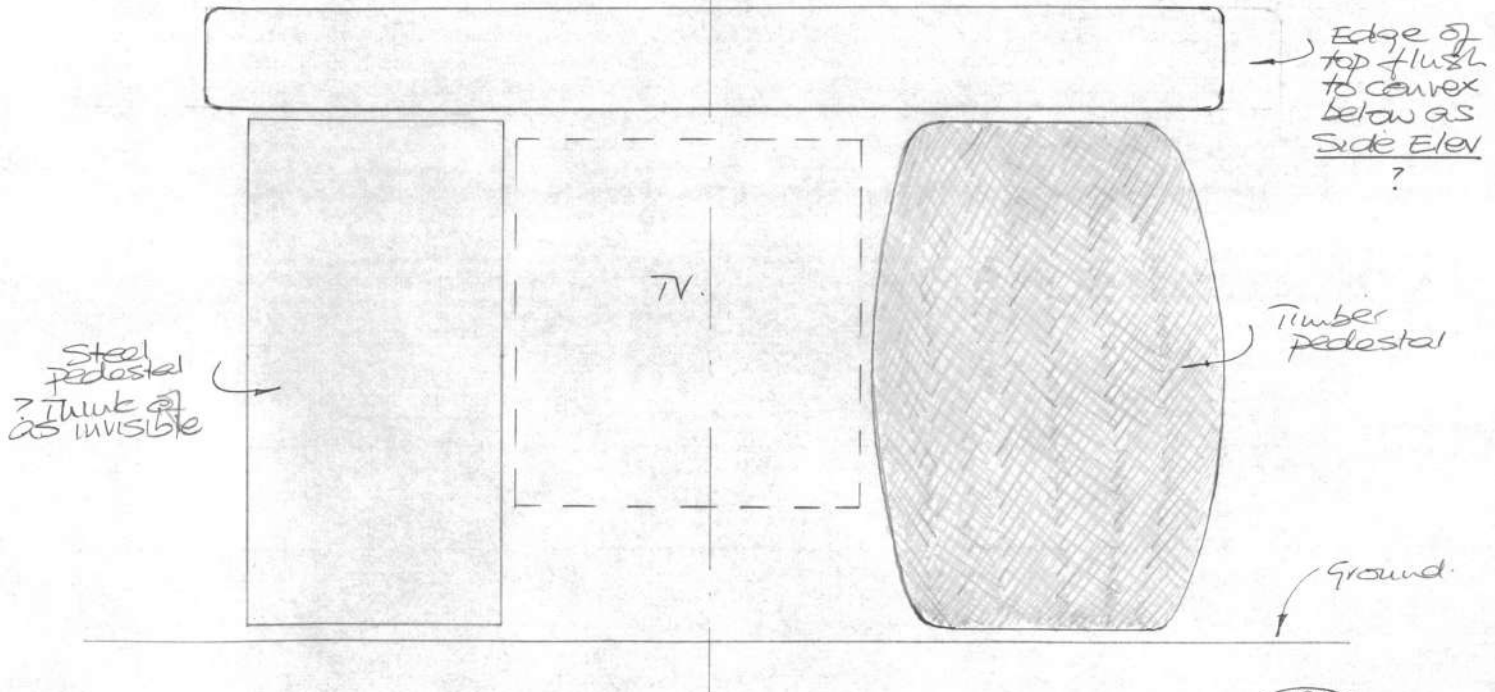
Left Side - Elev / Sect.



Unbalanced - ? most abstract option

32  
Type C.

1-910 m.



Steel pedestal  
? Think of as invisible

Timber pedestal

Ground

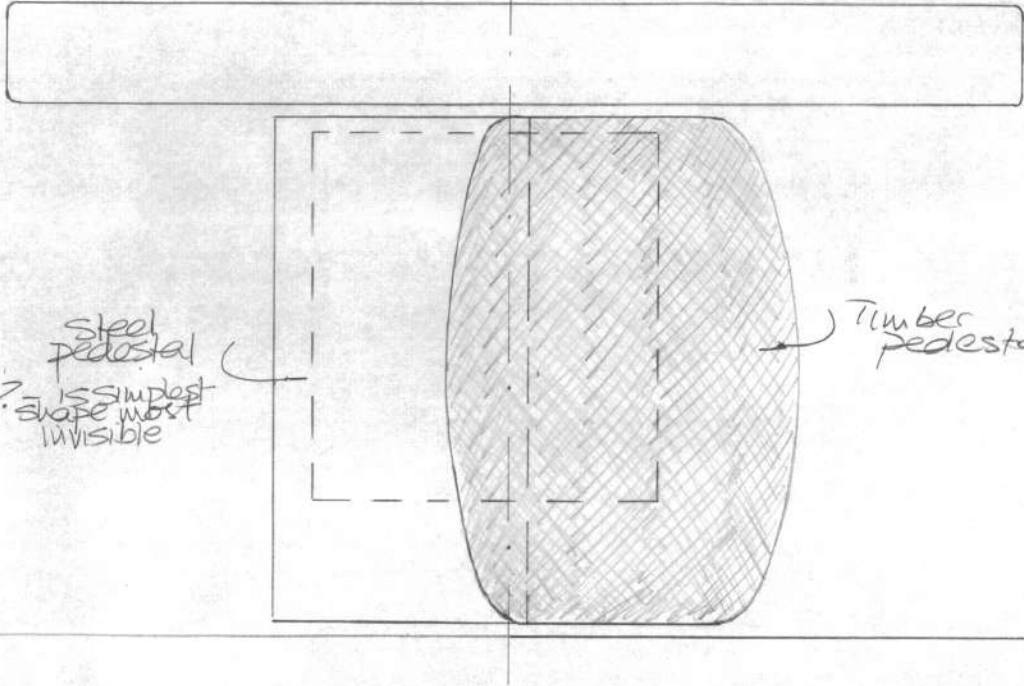
Doors Fully open





Type C.

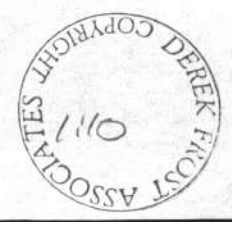
1.910 m

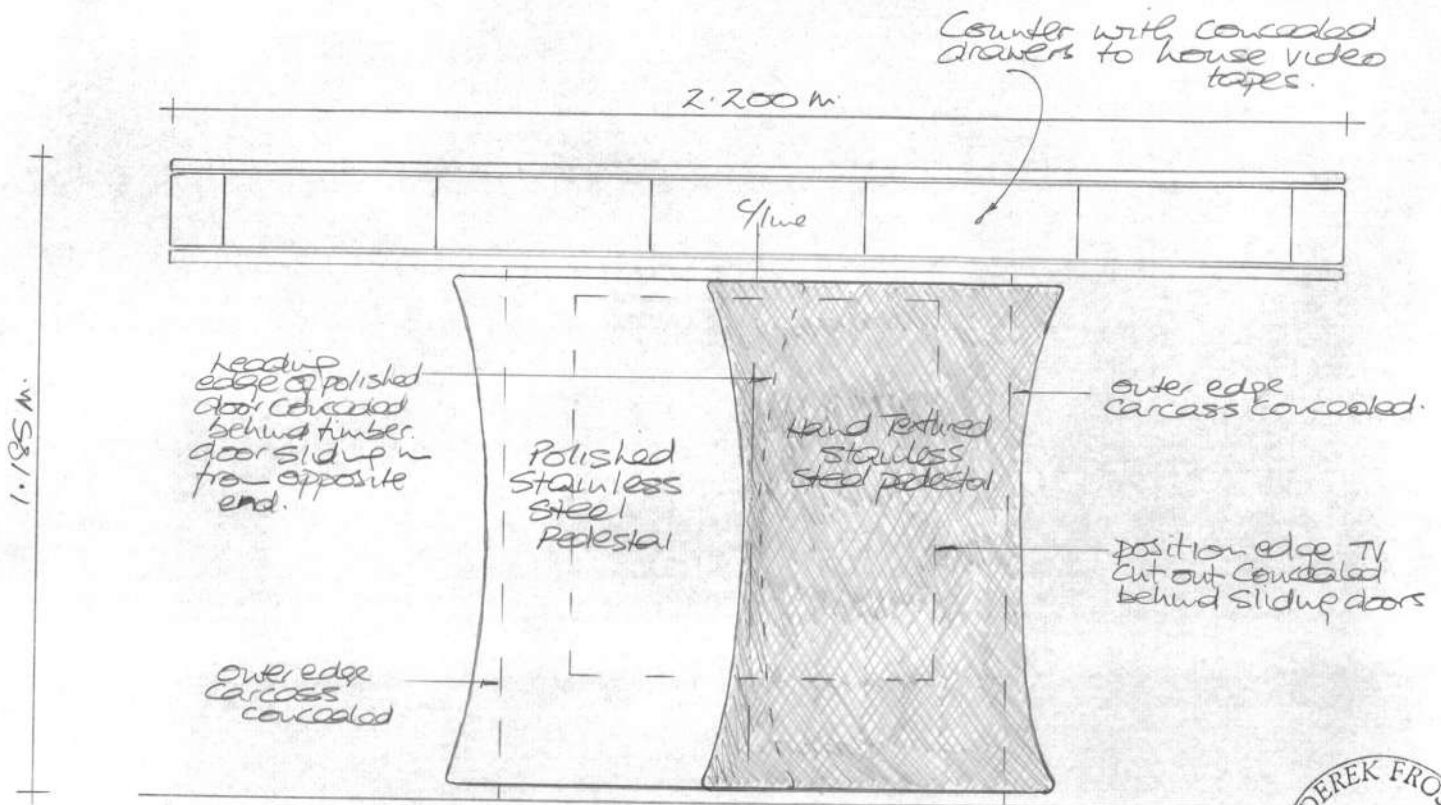


Steel pedestal  
? is simplest  
shape most  
invisible

Timber pedestal

doors closed.





Elevation showing sliding doors closed. -

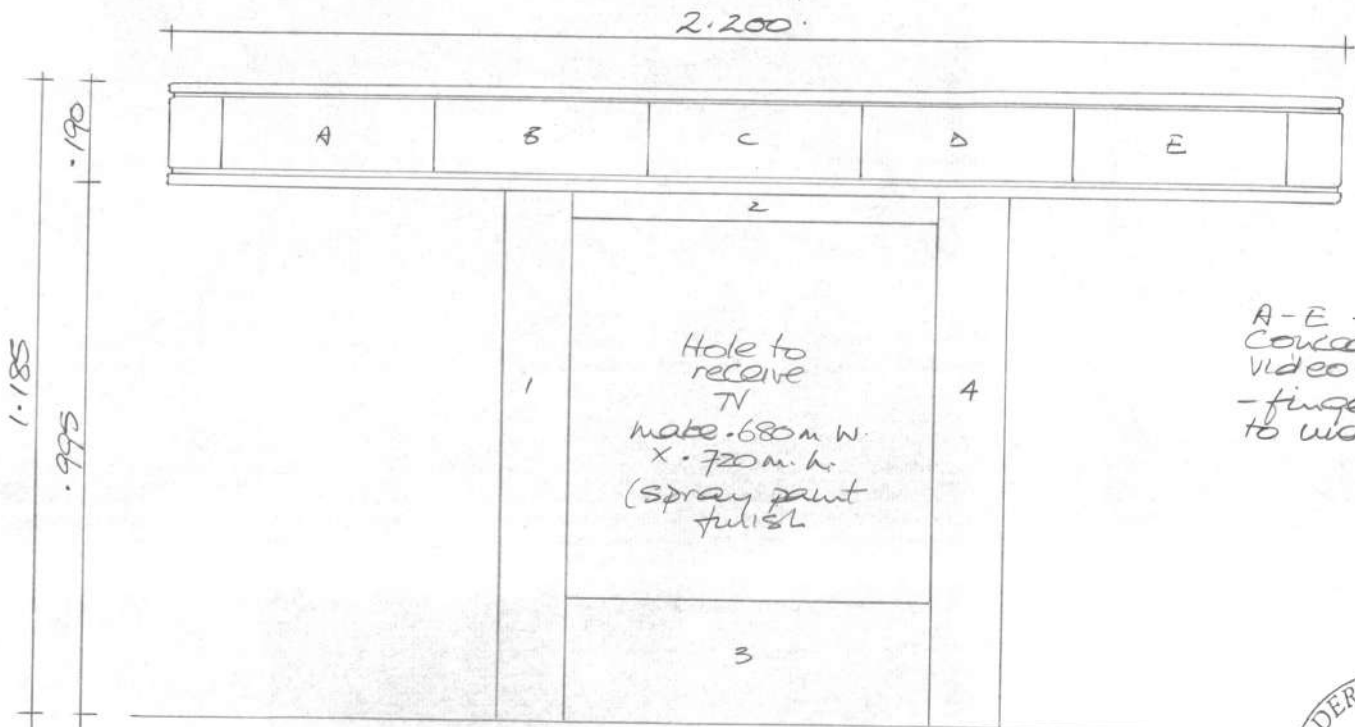
Proposed TV/Video Unit  
DRAWING ROOM - BUTE



1:10  
 Sept. '90.

TV/Video Combined .650m<sup>w</sup> x .705m<sup>h</sup> x .475m dp  
 Junction Box .310m<sup>w</sup> x .160m<sup>h</sup> x .056m dp

1.



A-E - S(no:)  
 Concealed  
 Video drawers  
 - finger holes  
 to underside.

Elevation showing sliding doors  
 omitted - 1-4 pieces of 20mm thick marble/  
 No: 3 demountable - access to junction box

Proposed TV/Video Unit  
Drawup Room - BUTE

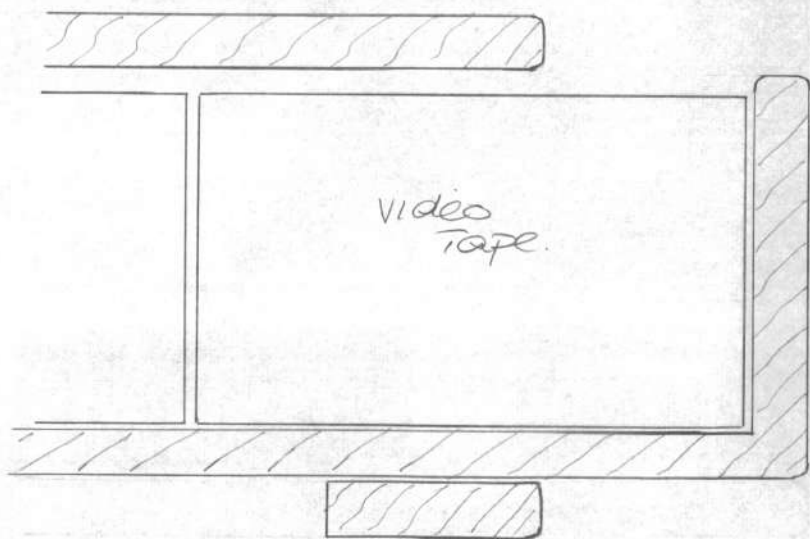


1:10  
 Sept. '90.

Store Videos 2 deep in  
Drawers (allow 13.5cm internal  
Height)

Tape Sizes inc box : 20.5 x 12.5 x 3.2 cm.

Top in hardwood  
-detail as  
Sketch 7.



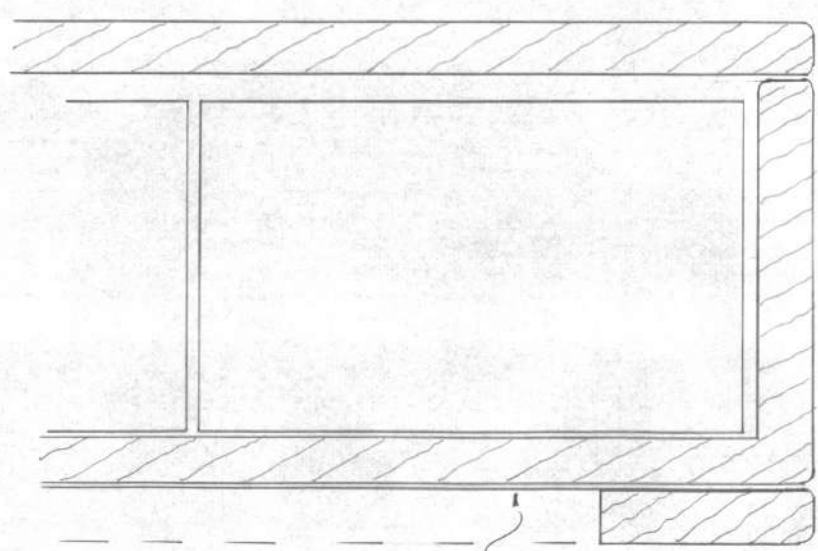
Section  
Video Tape Drawer Open  
TV / Video Cabinet BUTE.



1/2 scale  
Sept '90.

Store Videos 2 deep in drawers.  
Allow height 13.5cm within drawers.

Top to be made in hard wood to be selected with panel to top surface in book-matched veneer.  
Allow for American walnut + black American burr walnut in pickup.



fixed rail



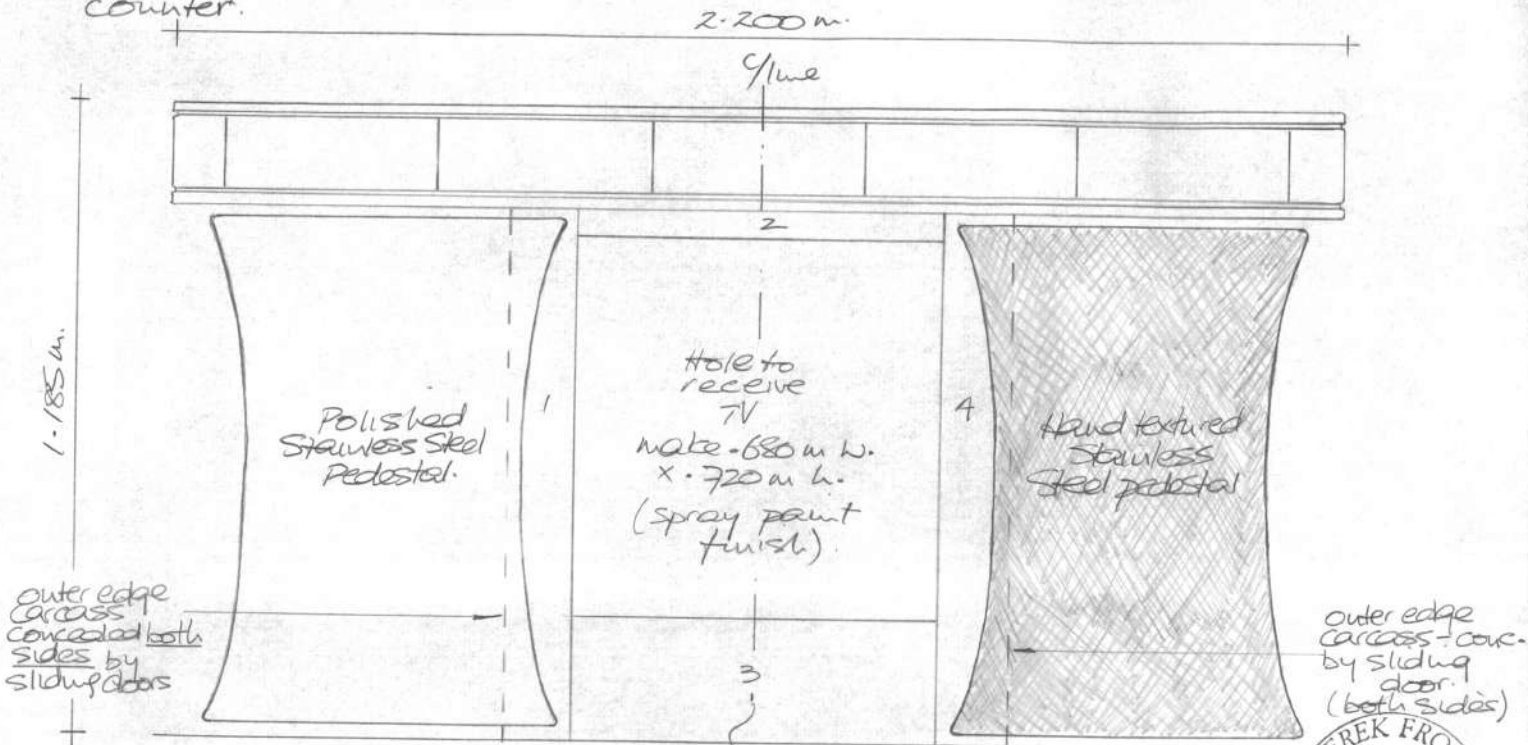
Section  
Video Tape Drawer Closed  
TV/Video Cabinet - BUTE

finger hole under to bring drawer forward.

Sept 90  
1/2 scale.

? Pedestals - top hung  
 - Sliding tracks to underside  
 counter.

3.



FRONT ELEVATION SHOWING  
 SLIDING DOORS FULLY OPEN

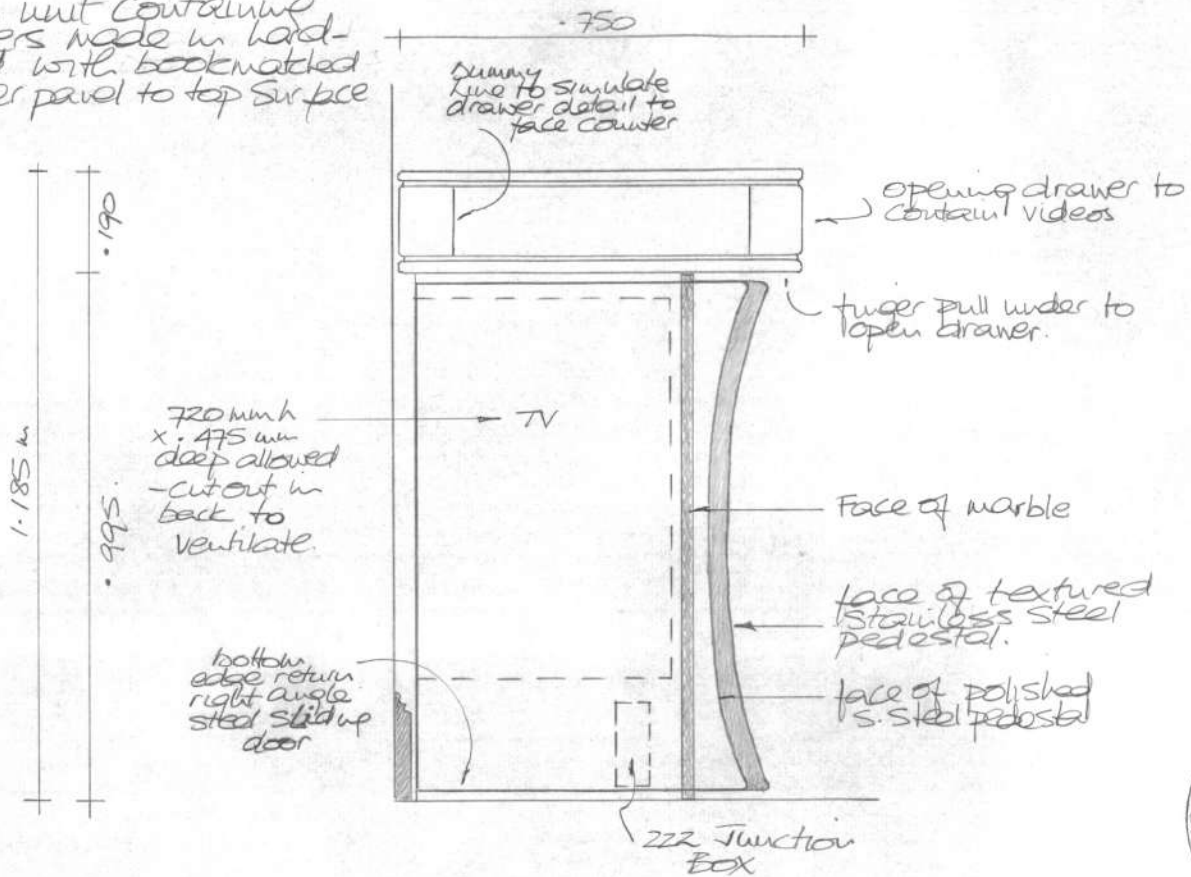
Demountable to  
 provide access  
 to junction box - 1-4  
 Flush pieces selected marble  
 slab to face.

Proposed TV/Video Unit  
DRAWING ROOM - BUTE



1:10  
 Sept. 190.

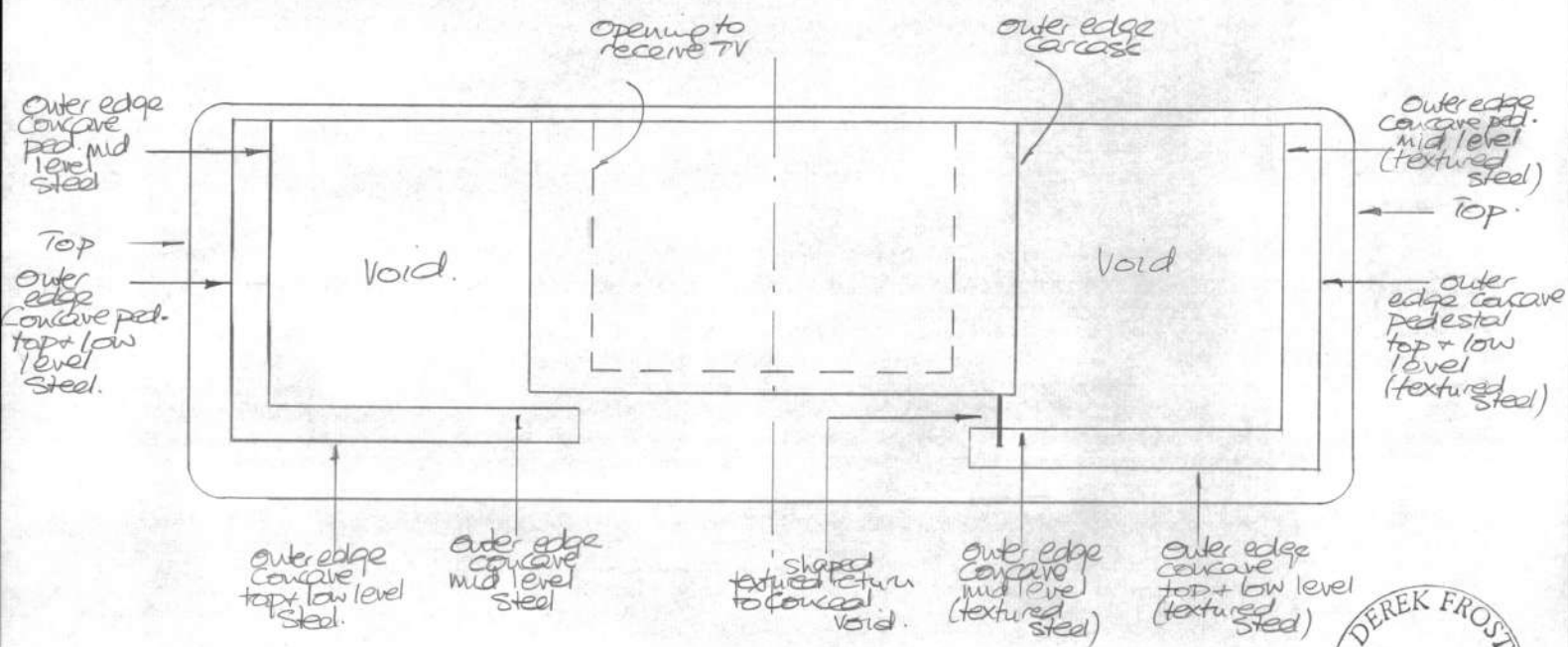
Top unit containing drawers made in hard-wood with bookmatched veneer panel to top surface



Proposed TV/Video Unit  
Drawing Room - BUTE  
- Left Side - Elev. / Sect

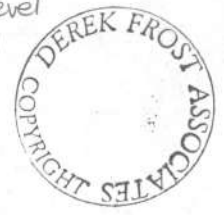


1:10  
Sept 190.



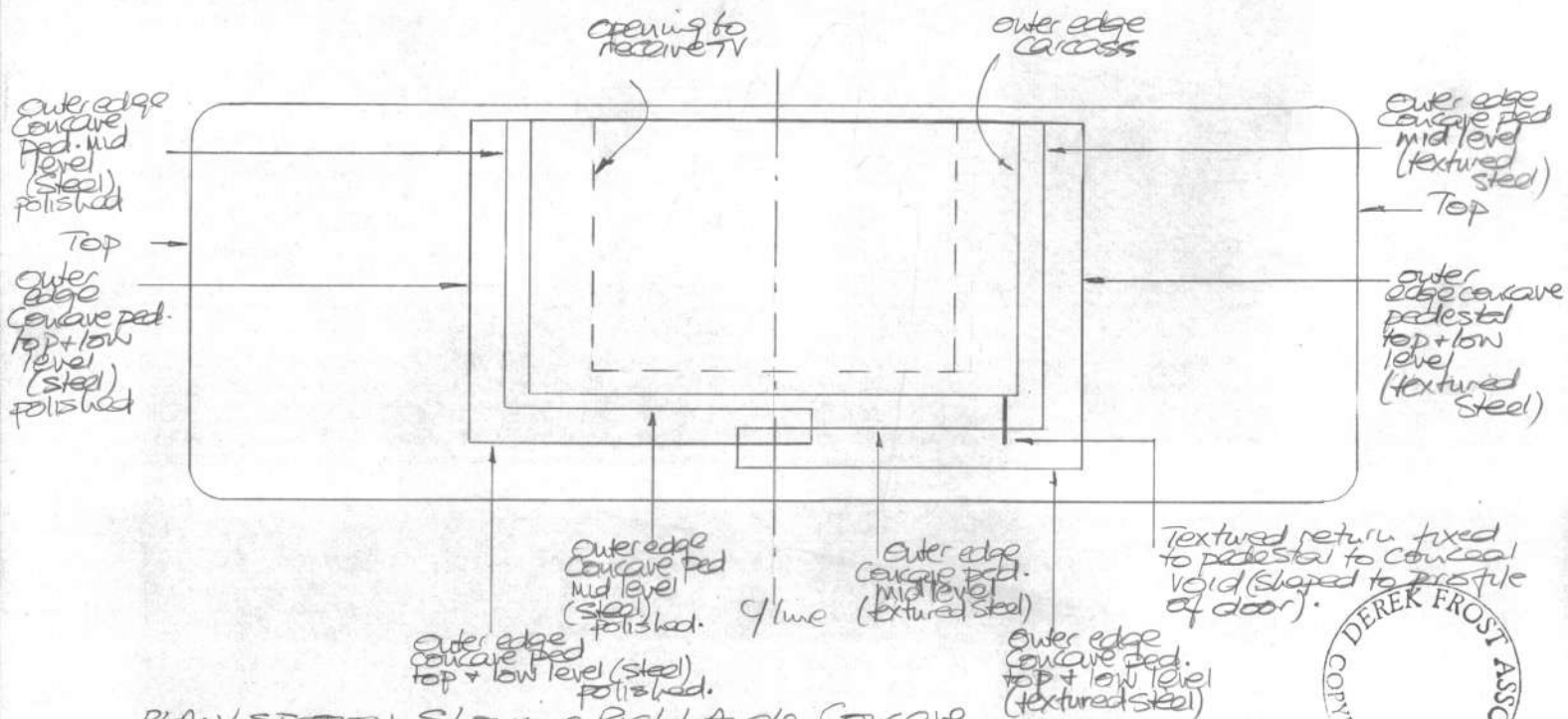
PLAN/SECTION Showing Right Angle Concave Sliding doors - Fully open

PROPOSED TV/Video Unit  
DRAWING ROOM - BUTE



1:10  
Sept '90.





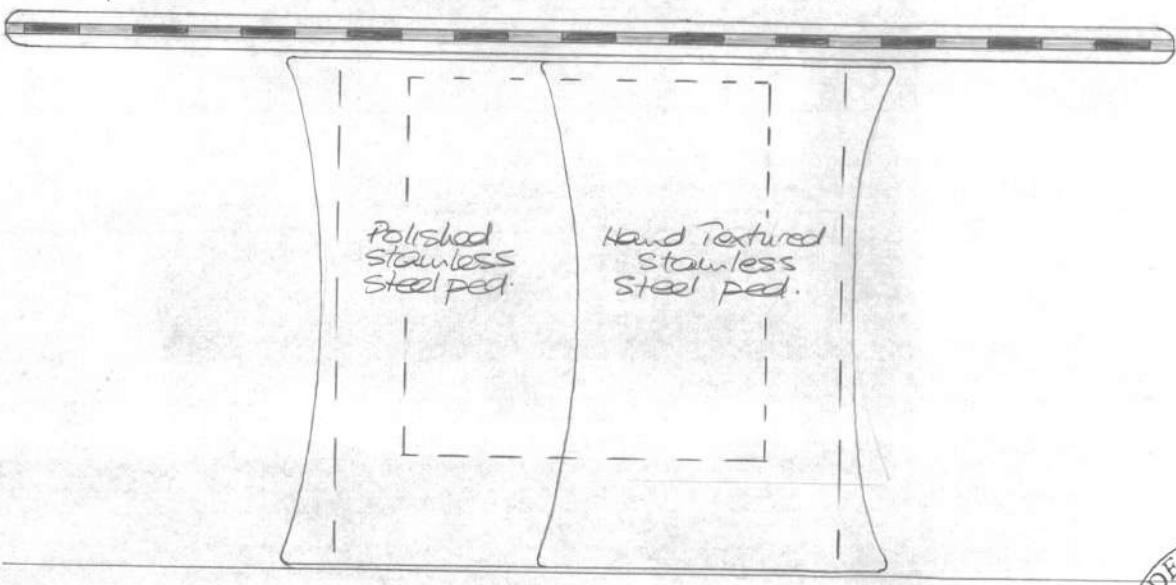
PLAN/SECTION Showing Right Angle Concave Sliding Doors - Fully Closed

PROPOSED TV/ Video Unit  
DRAWING ROOM - BUTE

1/10  
Sept 1990.

Top surface - Book matched veneered panel.  
 Revised top in Hardwood /  
 overall thickness 70mm - profiled  
 edge inlaid with 20mm high flush  
 inset steel strip alternating width  
 100mm polished + hand textured as base pedestals

1.040 m.  
 .070 m.  
 .970 m.



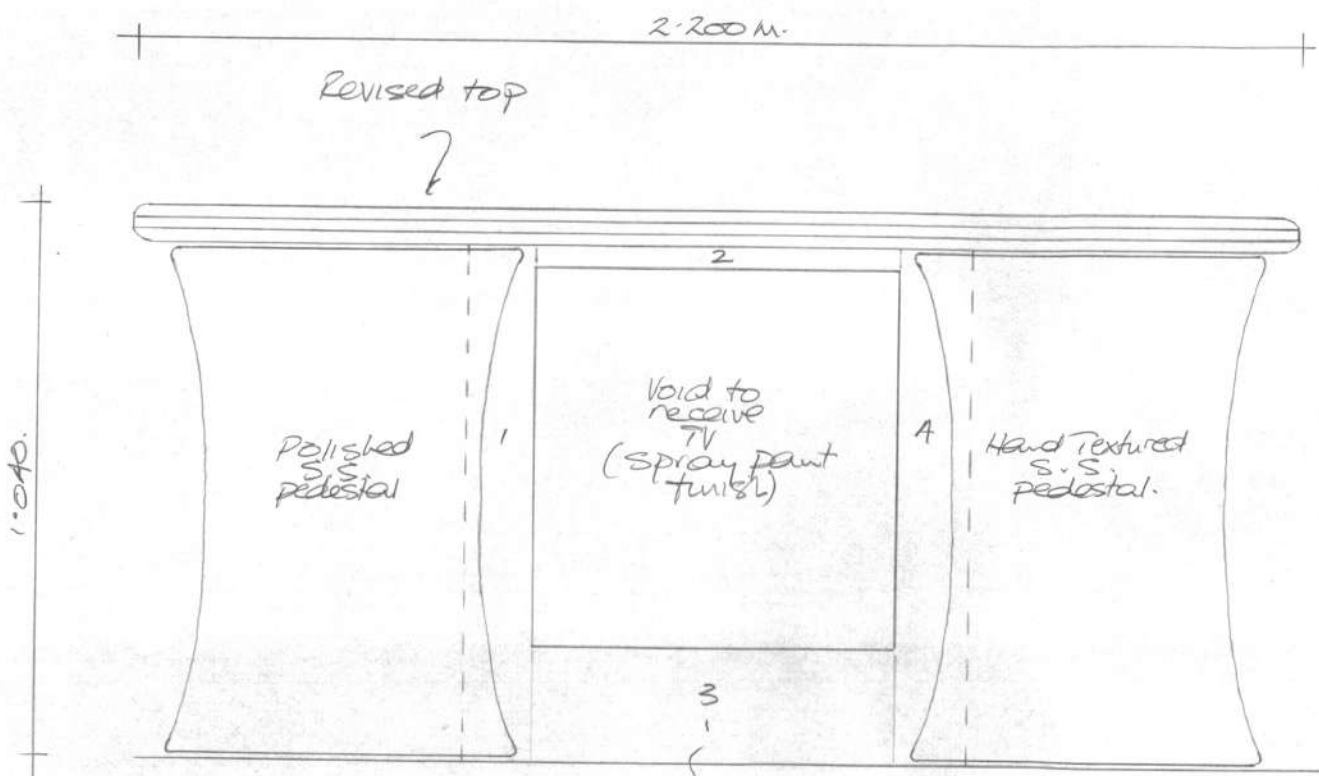
Polished  
Stainless  
Steel ped.

Hand Textured  
Stainless  
Steel ped.

REVISED  
Proposed TV/Video Unit  
Drawing Room - BUTE



1:10  
 NOV. 190.

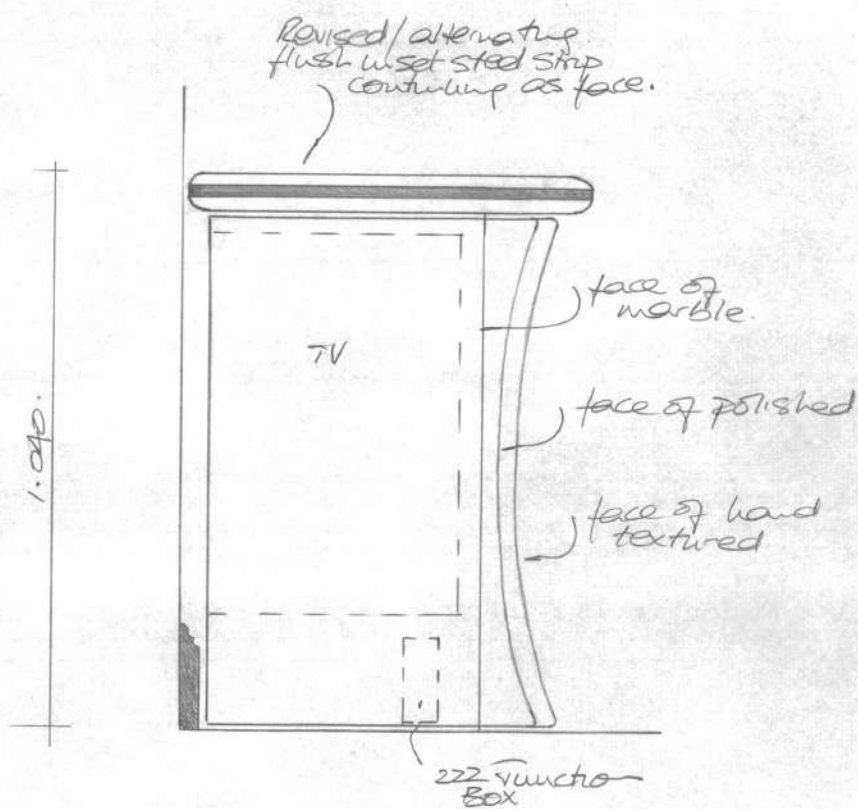


REVISED  
 Proposed TV / Video Unit  
 Drawing Room - BUTE.

Removable  
 access to junction  
 box  
 1/2/3/4 - marble  
 pieces (not necessary  
 match up from 1 slab  
 - minimize waste)

1:10  
 NOV 1990

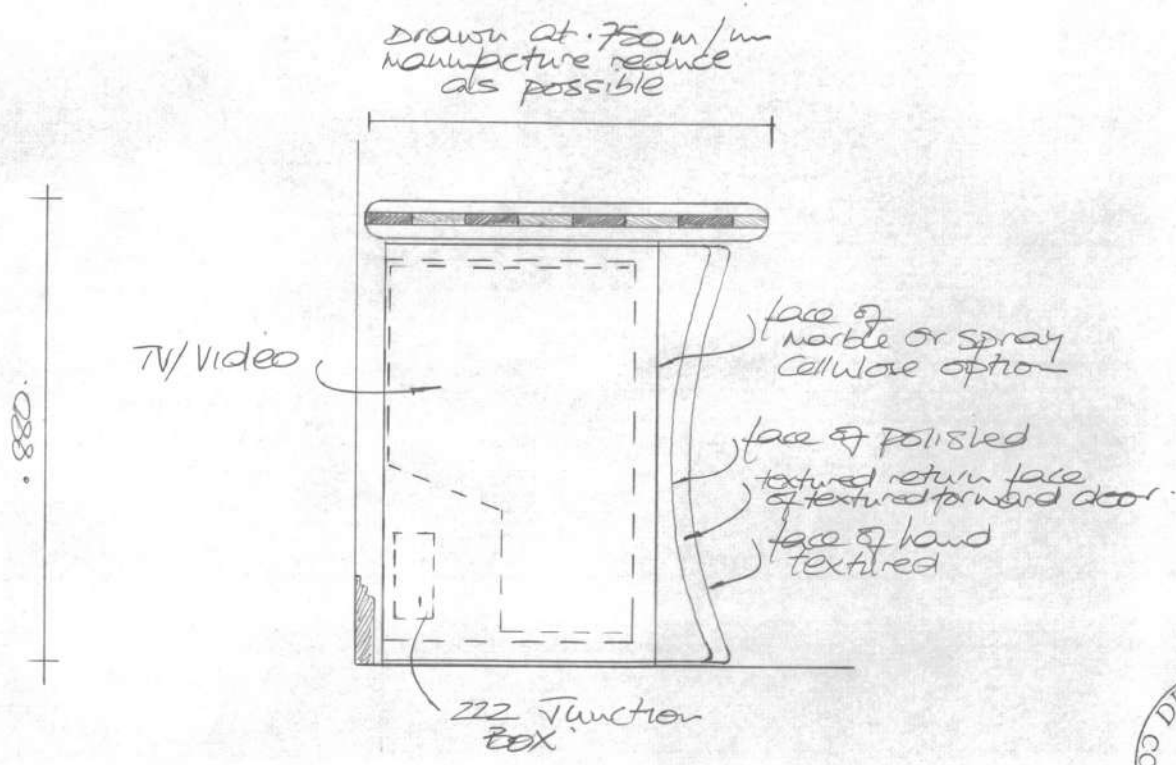
DEREK FROST ASSOCIATES  
 COPYRIGHT



REVISED  
 Proposed TV/Video Unit  
 Drawing Room - BUTE  
 - Left Side - Elev. / Sect



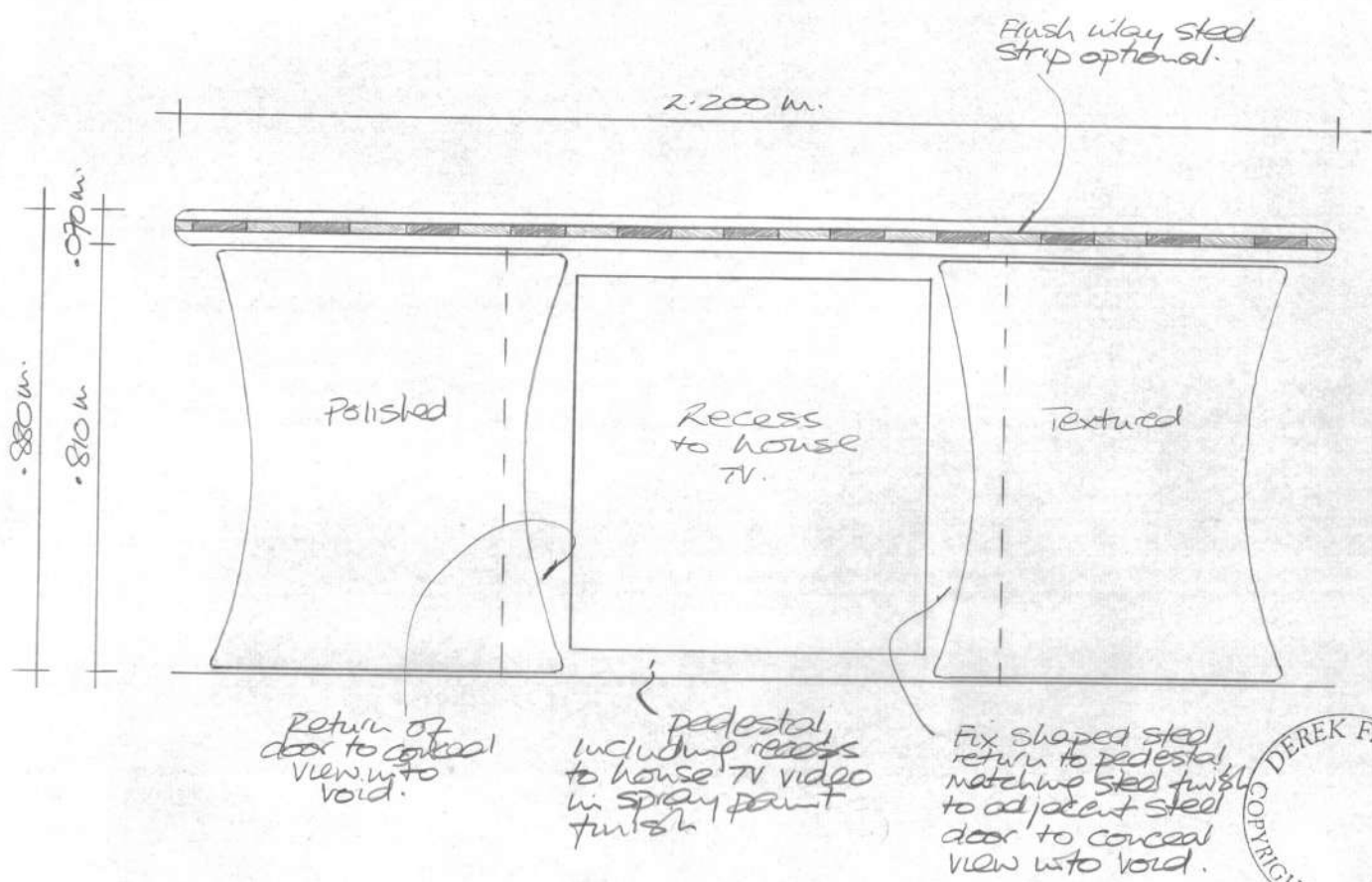
1:10  
 NOV. 190-



REVISED B.  
Proposed TV/Video Unit  
DRAWING ROOM - BUTE  
- Left Side - Elev./Sect.



1:10  
 NOV. 190.



Return of door to conceal view into void.

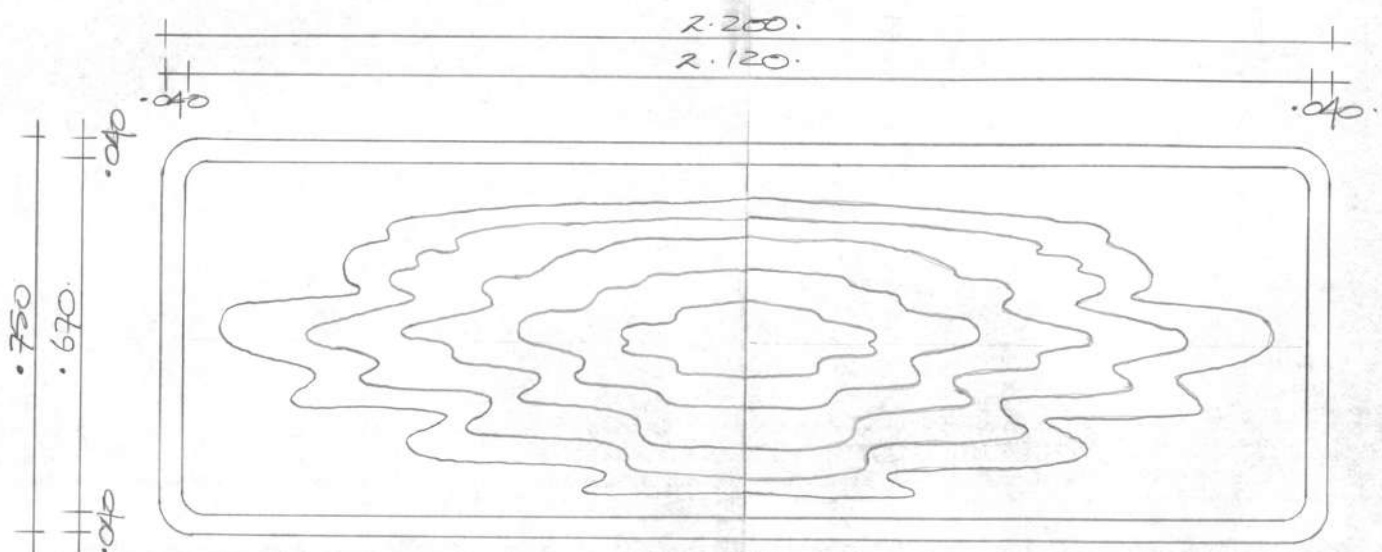
pedestal, including recess to house TV video in spray paint finish

Fix shaped steel return to pedestal matching steel finish to adjacent steel door to conceal view into void.



REVISED B - DOORS OPEN  
Proposed TV / Video Unit  
Drawn Room - BUTE

1:10  
 NOV. 1990



NB - overall depth may reduce marginally dependent on thickness required re: sliding steel doors.

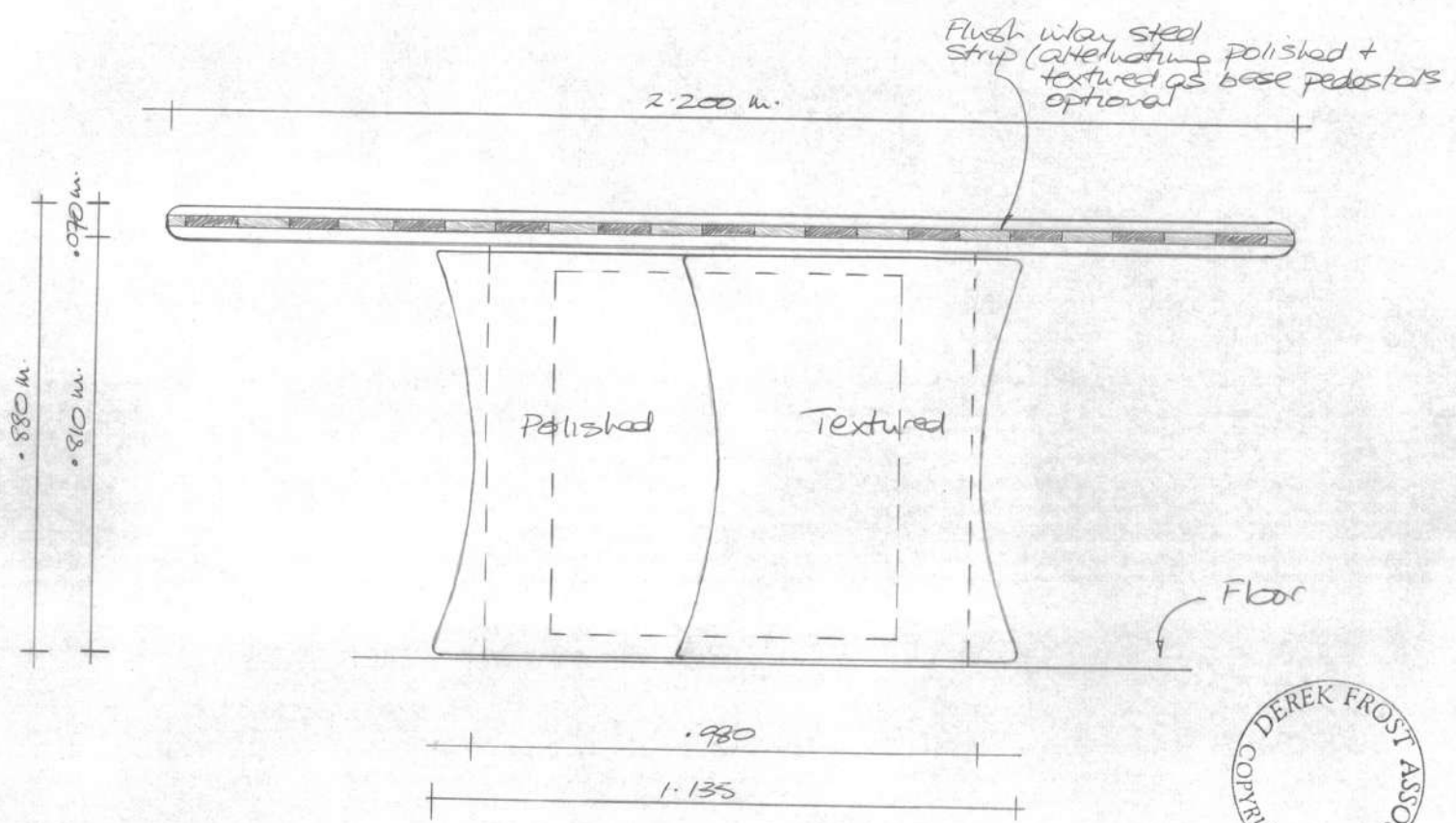
Plan of TOP showing Book matched Flame Veneer.

PROPOSED TV/ Video Unit  
DRAWING ROOM - BUTE



1:10  
NOV 1990.

1.



REVISED B - DOORS CLOSED.  
 Proposed TV/Video Unit  
 Drawing Room - BUTE.



1:10  
 NOV. '99.





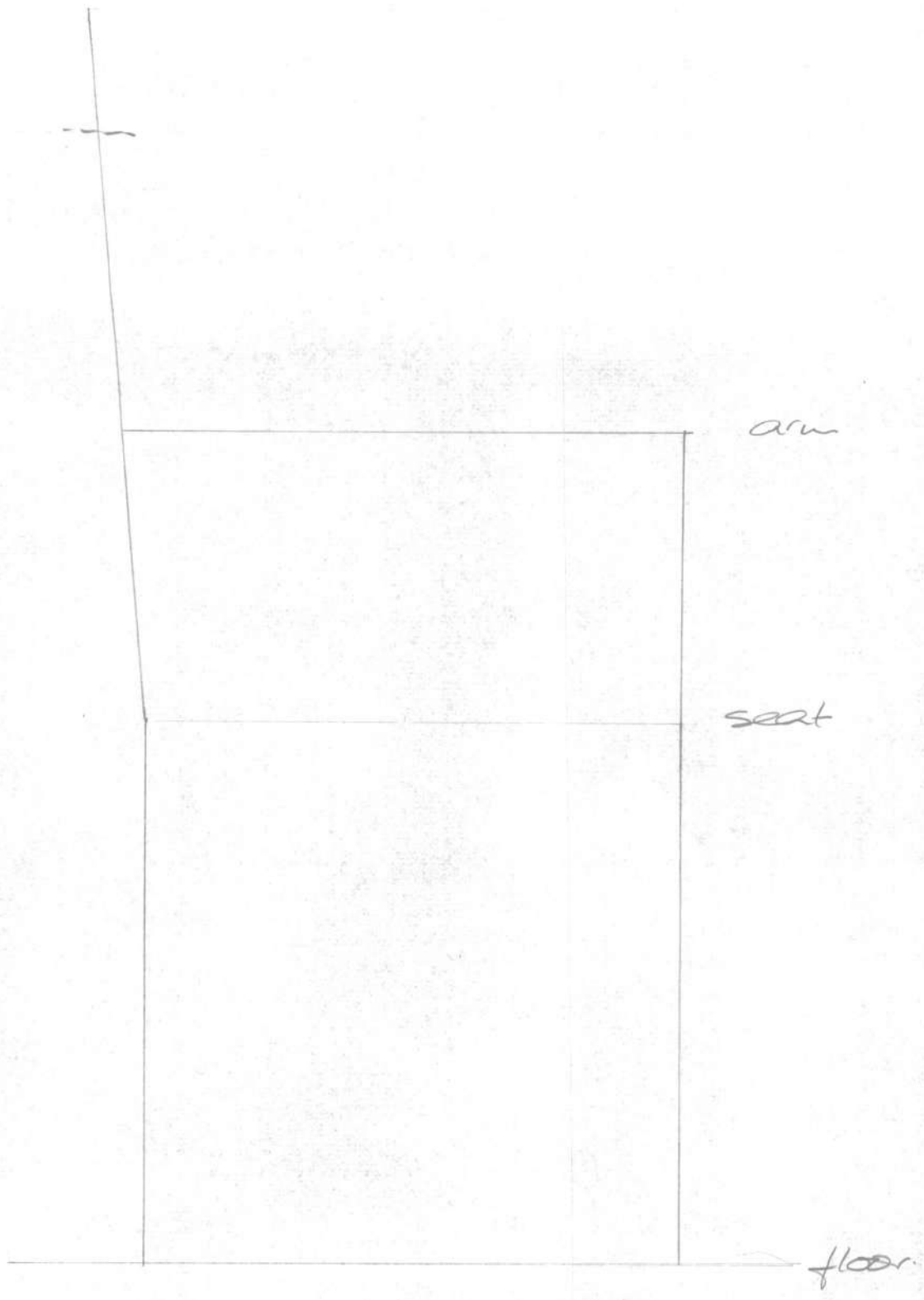
**DL**

**Draper**

**Dining Chairs**

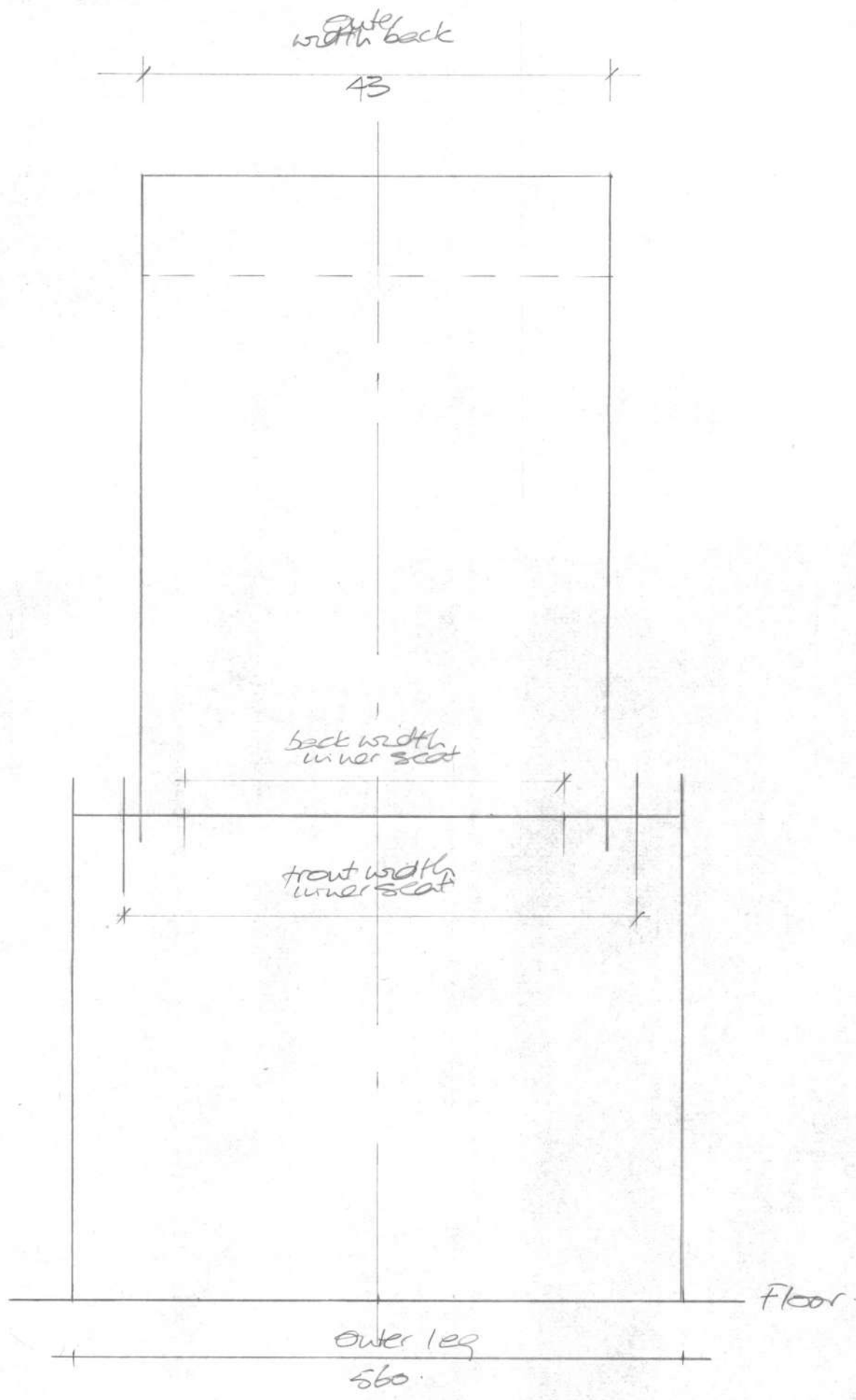
**London**

5/6?  
~~\*\*\*~~



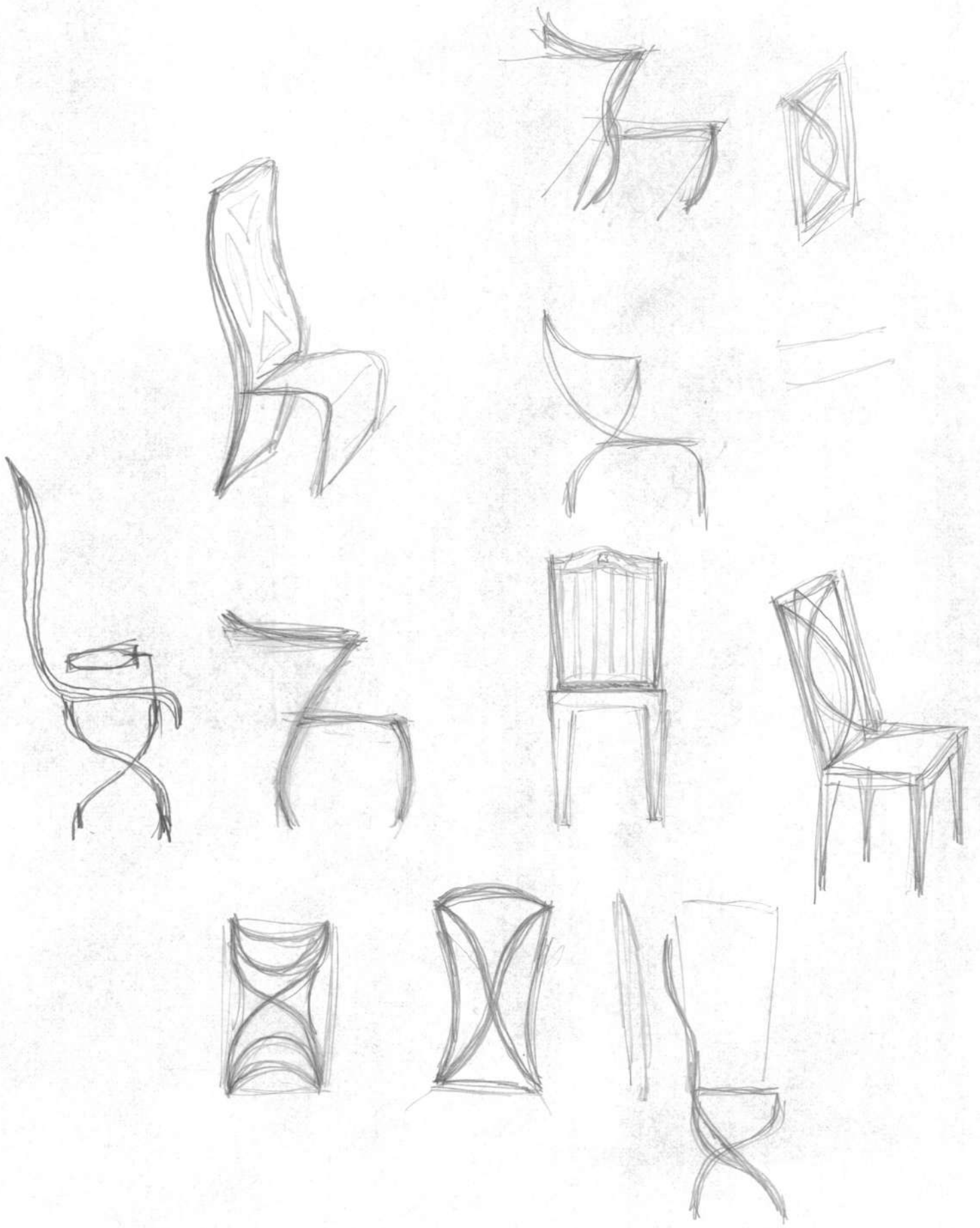
Surveyed chair (S)

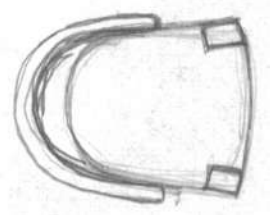
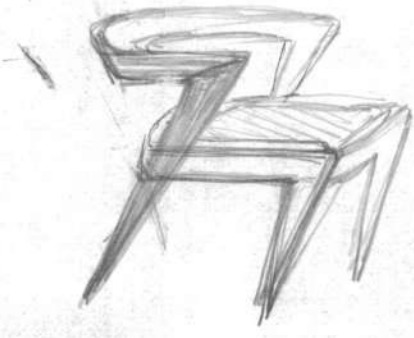
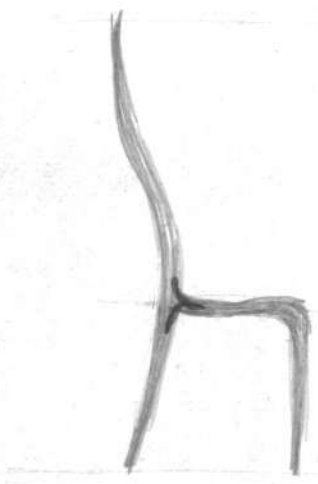
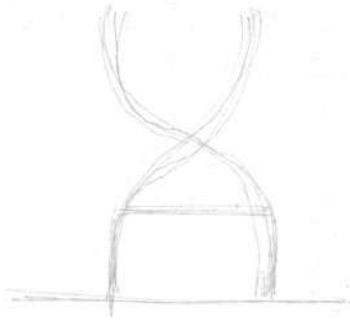
1:5  
Sept. 1902

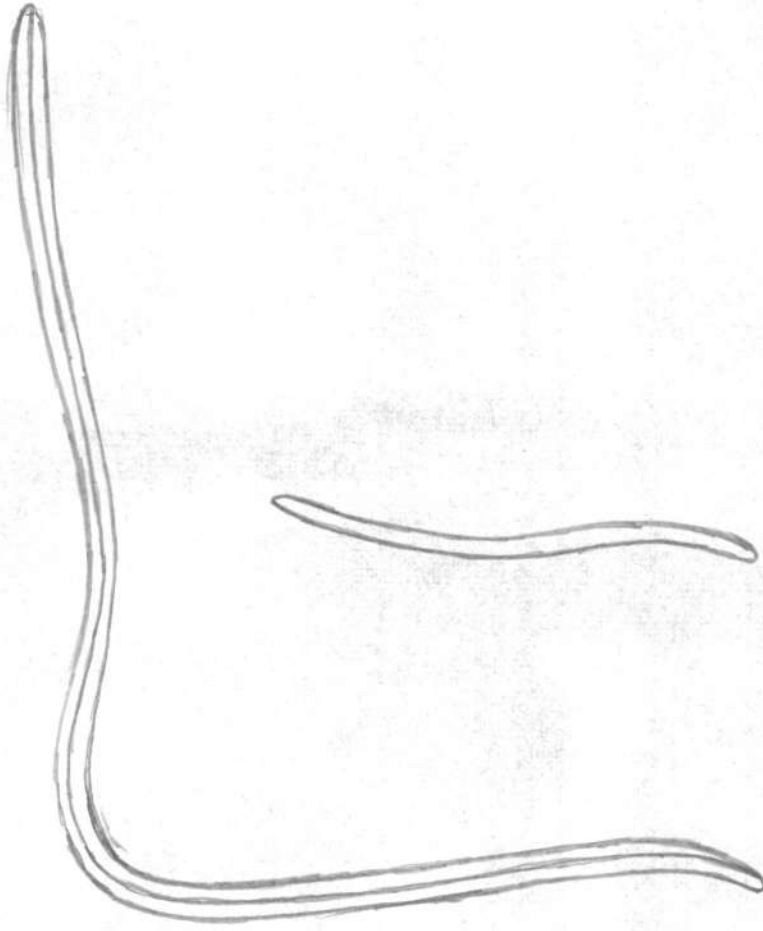


Surveyed chair(s)

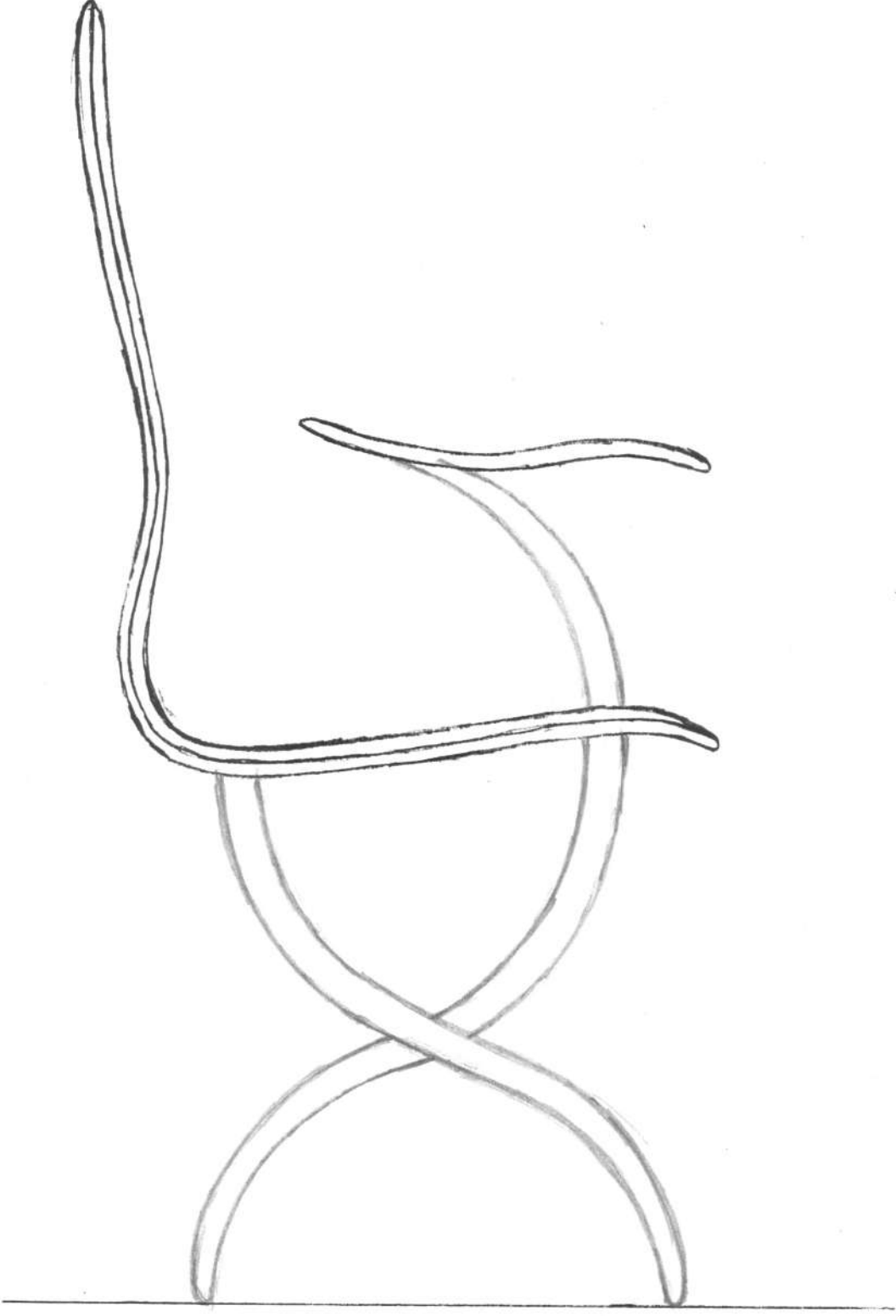
1:5.  
Sept 190





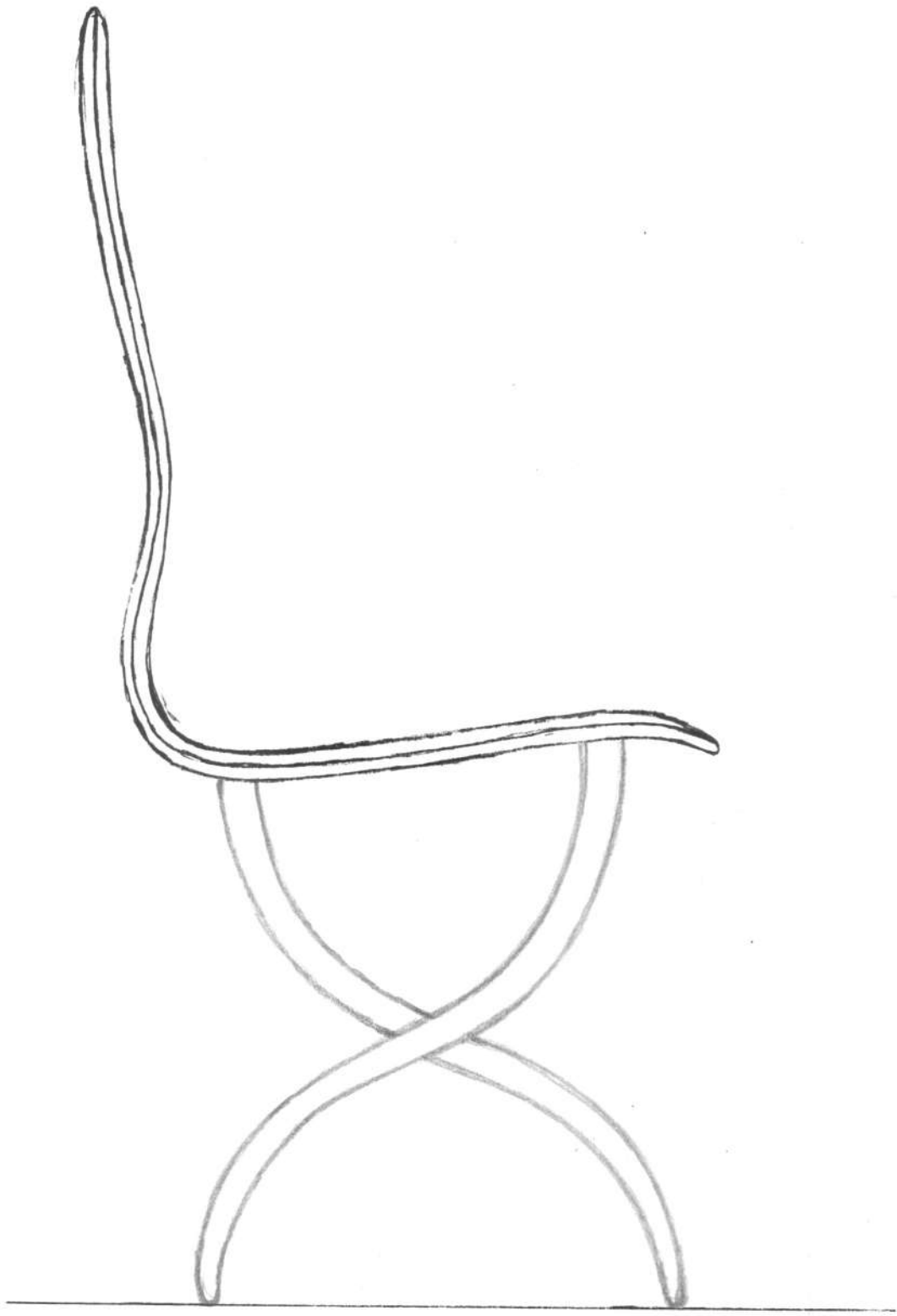


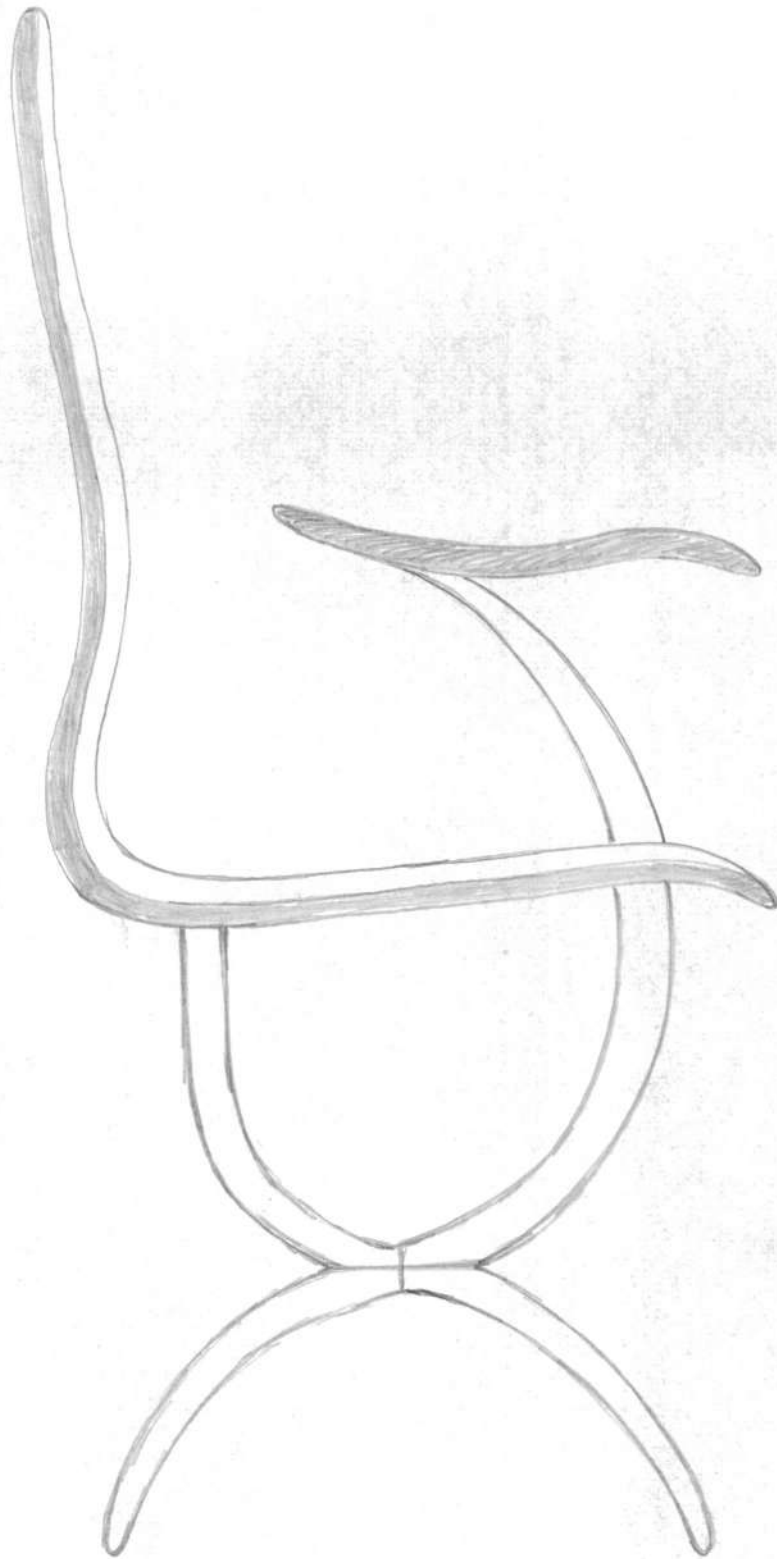
---





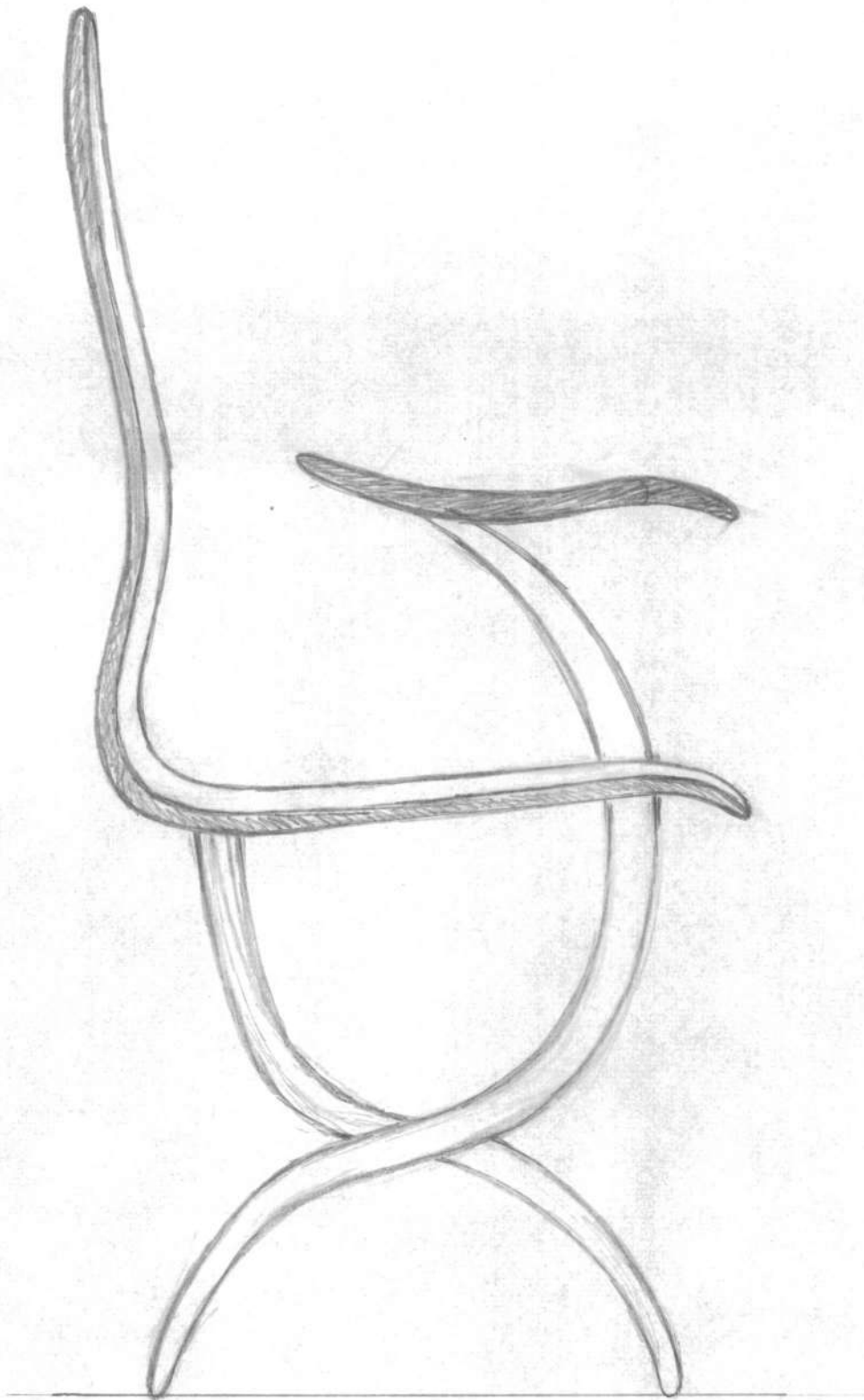
4





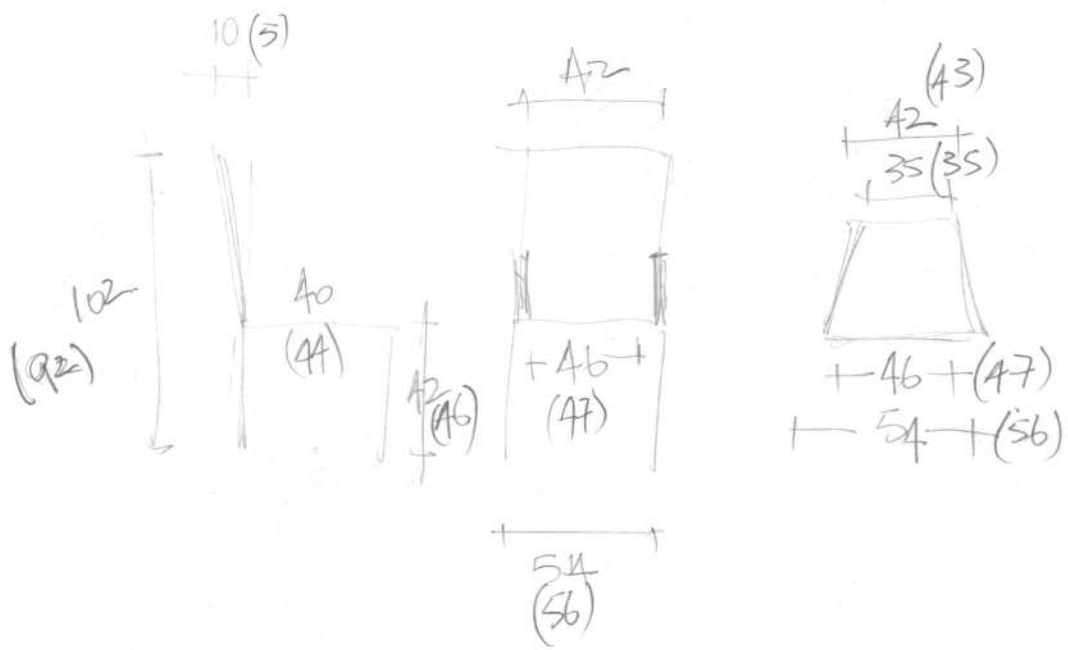
Butle - Drip Chairs  
Proposed.

1:5  
Sept '90

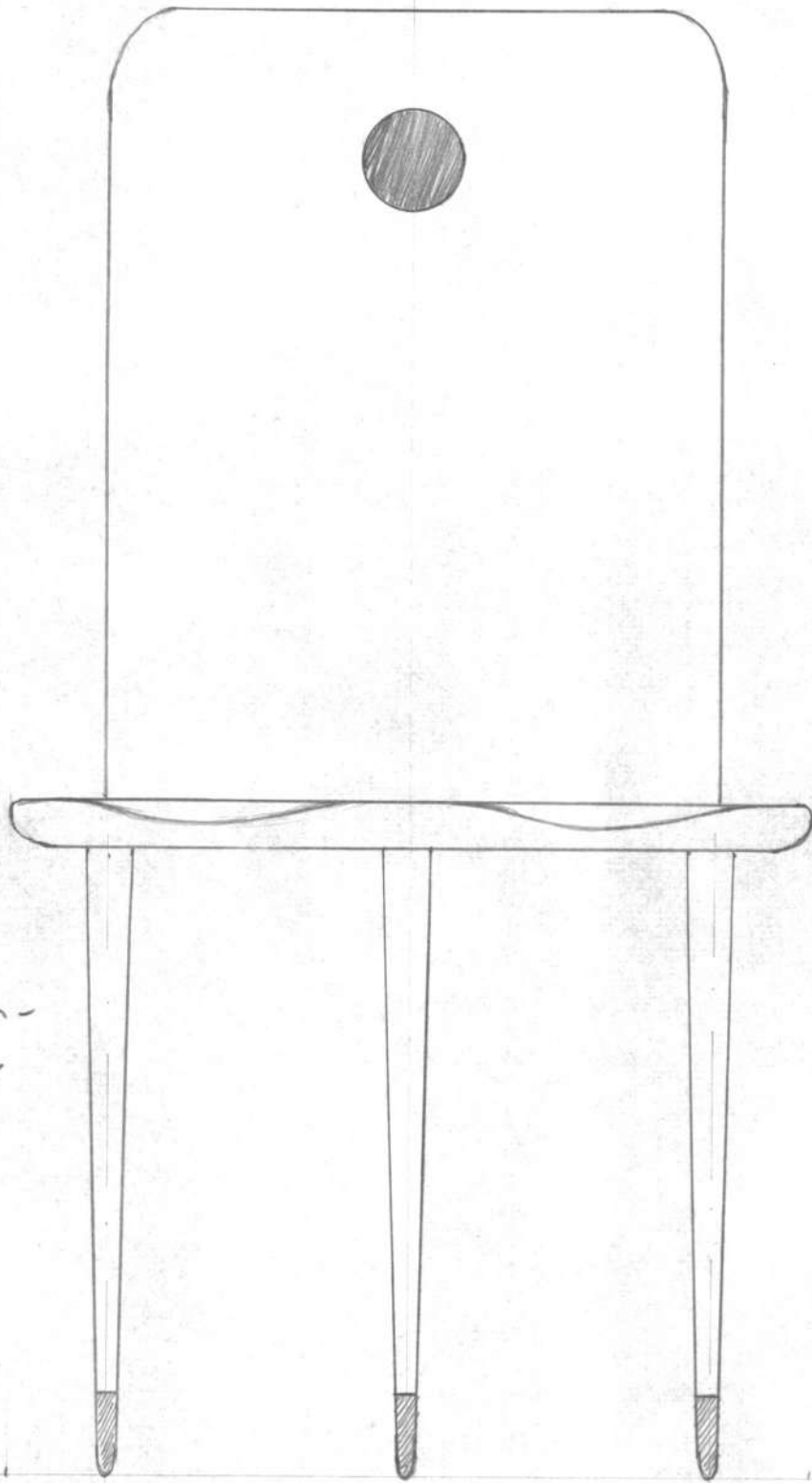


Bute - Dining chairs  
Proposed.

1:5  
Sept '90



Spk we re: possible  
3 legged variety.



Elbow version  
560 mm wide  
seat/inc arm

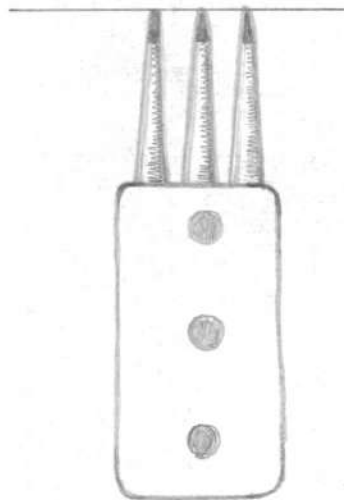
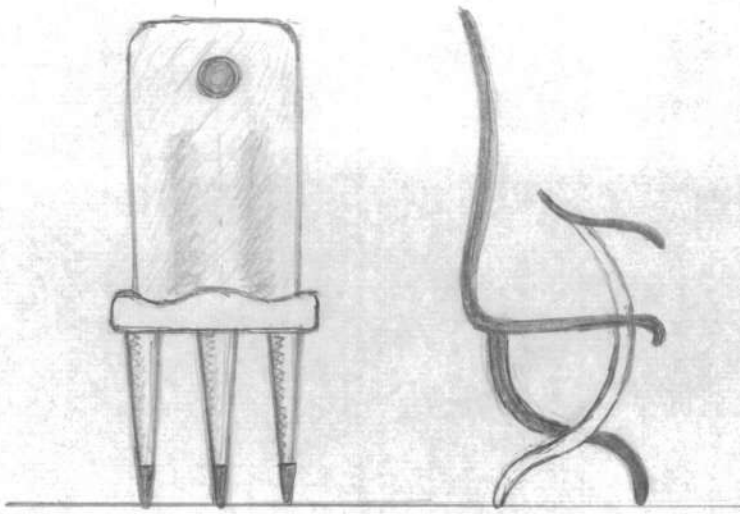
Armless version  
460 mm (?)

scale proportion -  
asky down/  
maintain heights  
constant.

Front Elev. - Type B / 3 Legged  
Dump Chair - BUTE - Elbow version  
size

1:5  
Sept '90

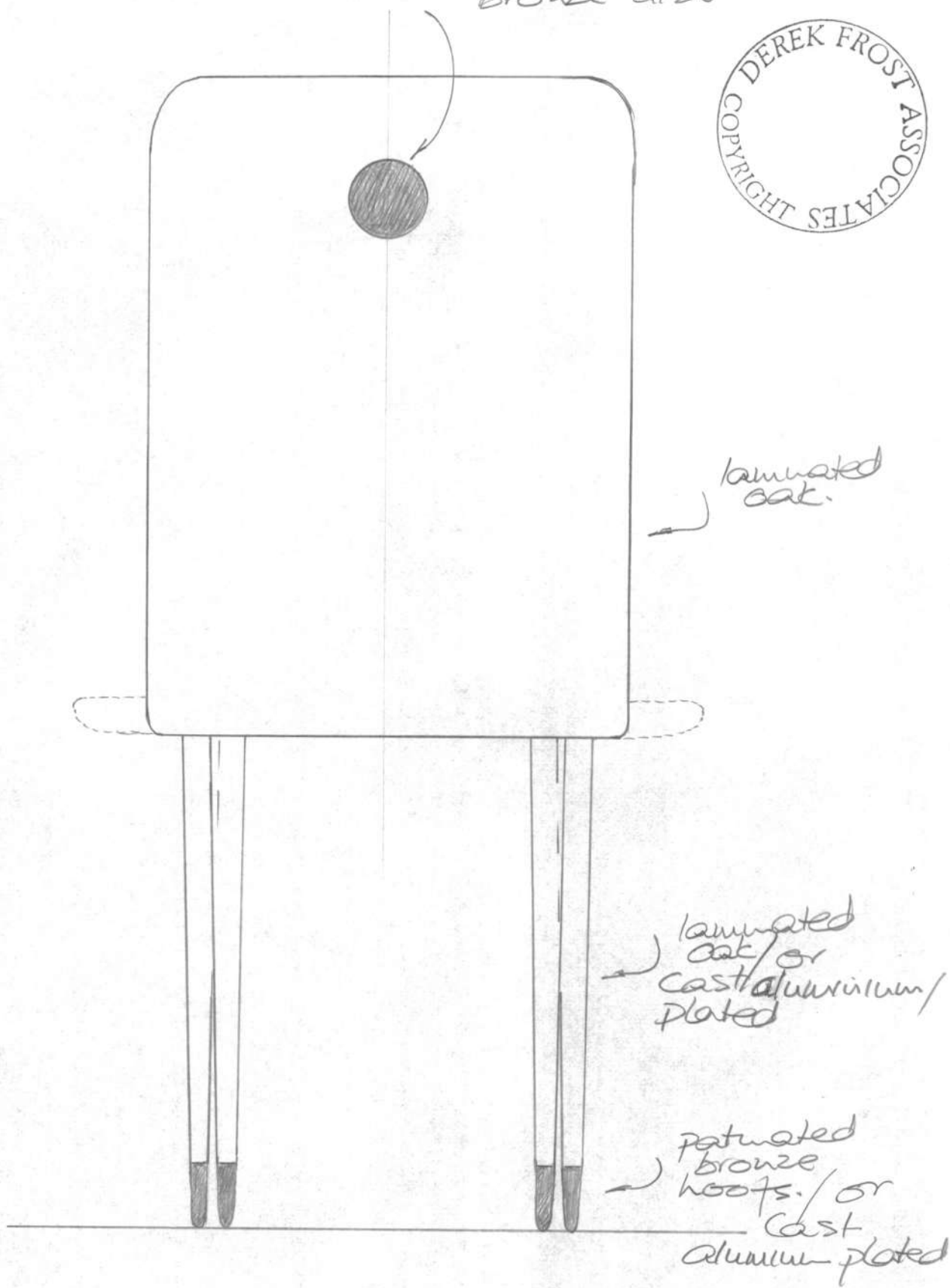
# Drip chairs - Bute



> confirm / estimate how much weight

? Try cut metal sheets - legs - laser cut!

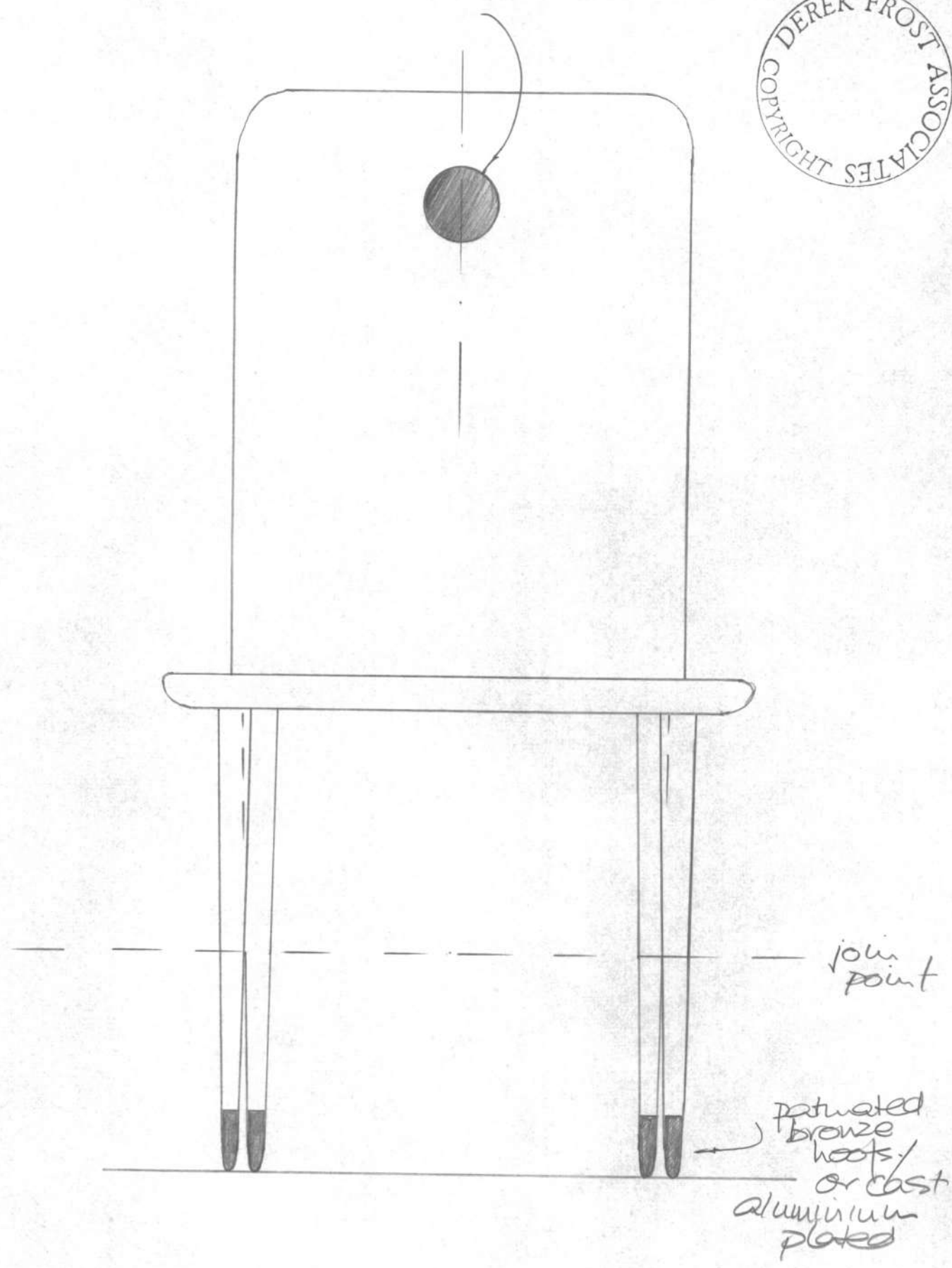
1  
Flush inset - patinated  
bronze disc



Rear Elevation - Type A.  
Dining Chair - BUTE

1:5  
Sept '90.

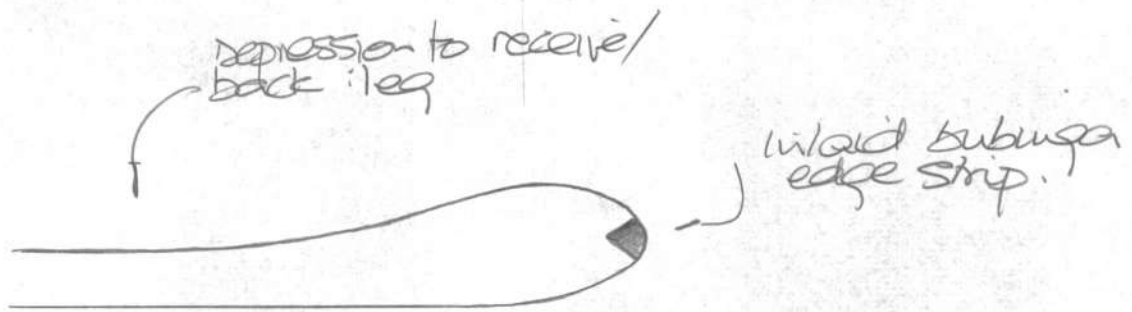
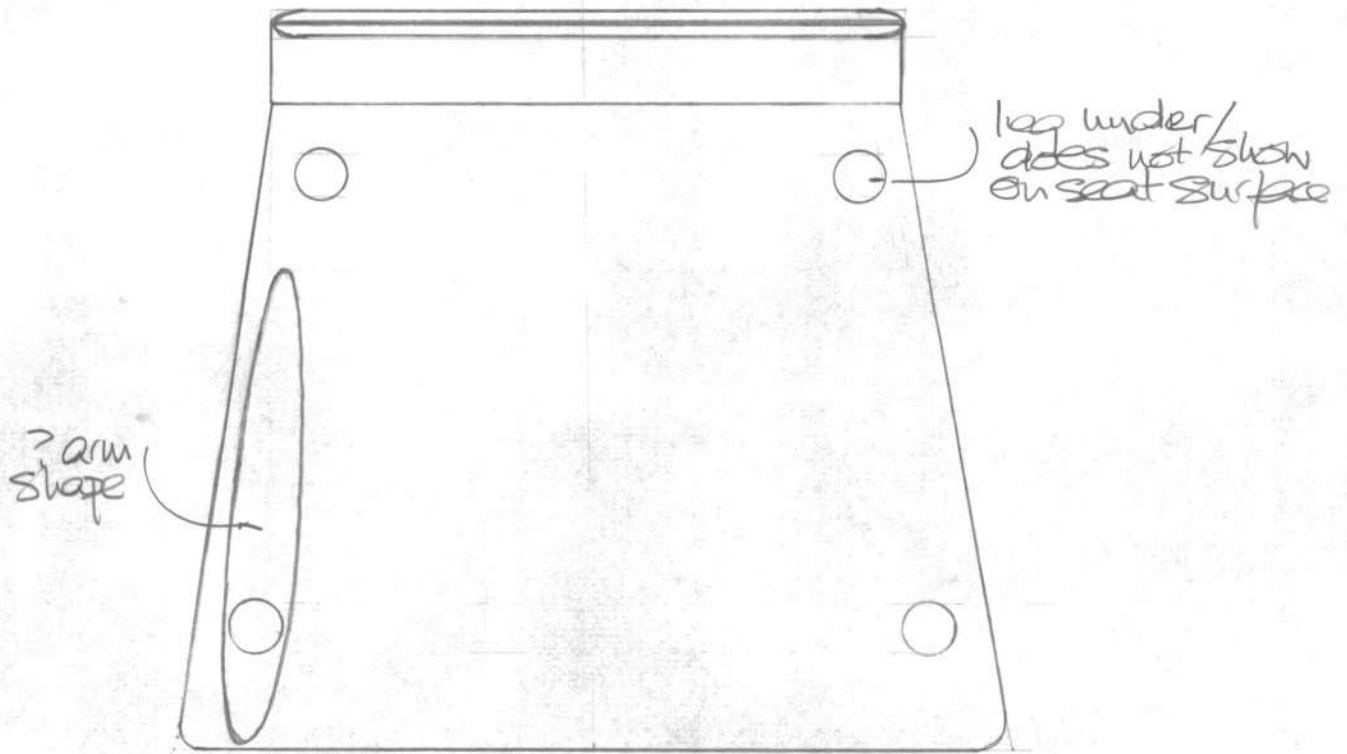
flush inset - patinated  
bronze disc.



Front Elevation - Type A.  
Dump Chairs - BUTE.

1:5  
Sept '90.

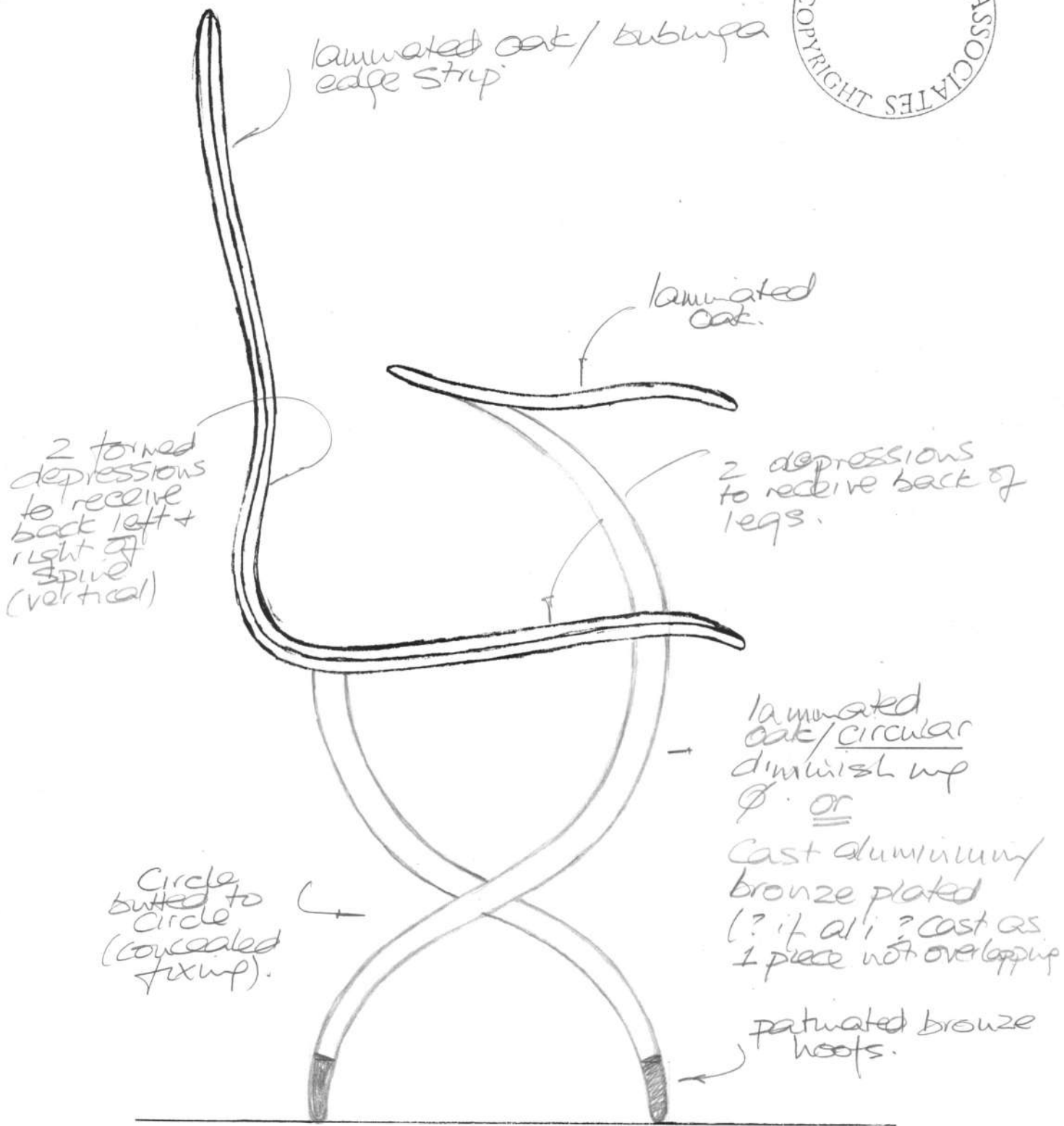




? Full scale / section through seat / back laminate

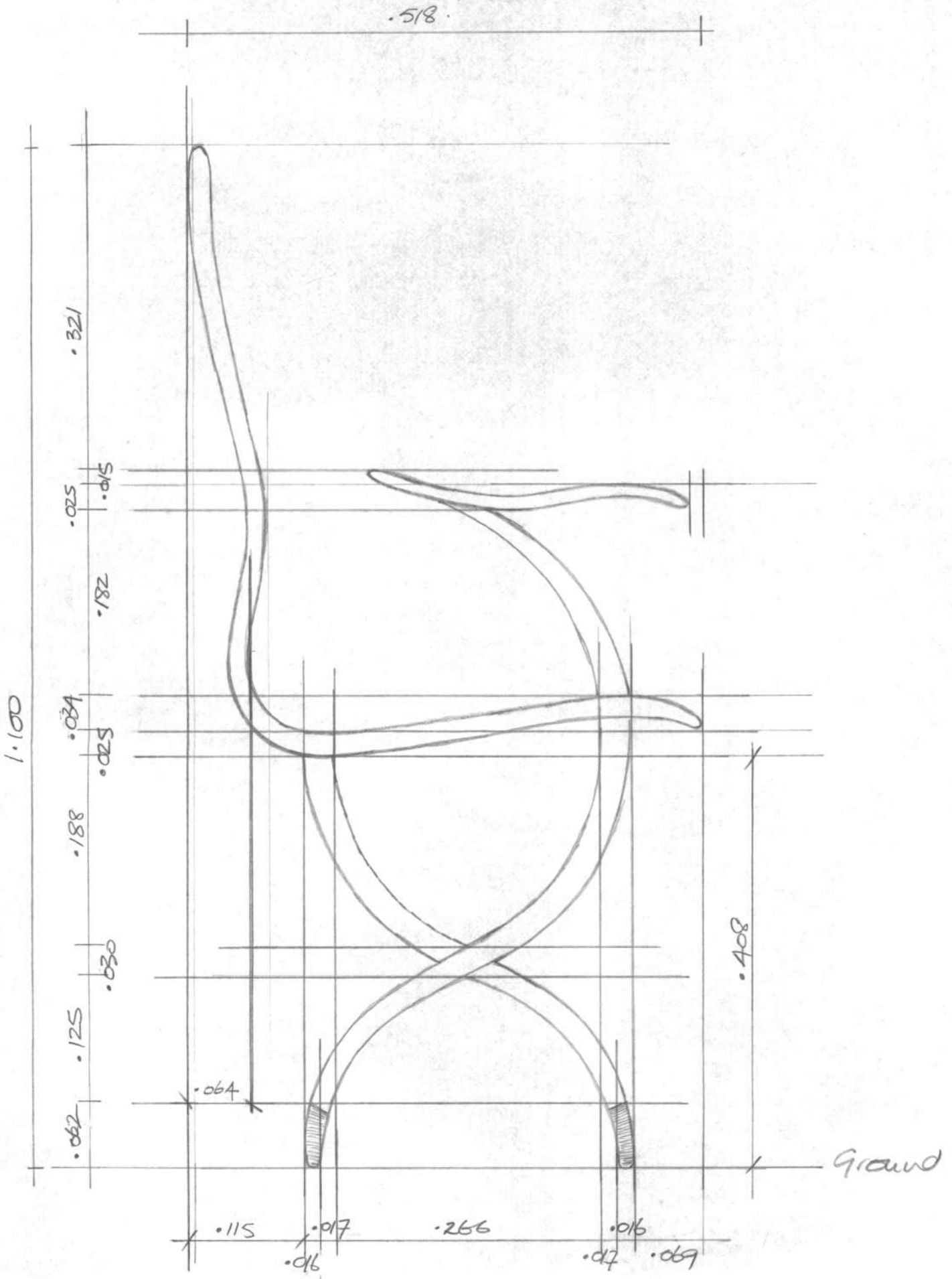
Elbow version

4



Side Elevation.  
Proposed Dining Chair  
BUTE

1:5  
Sept '90



Side Elevation  
BUTE DINING CHAIR

1:5  
DEC '90



